

UCP1 Antibody

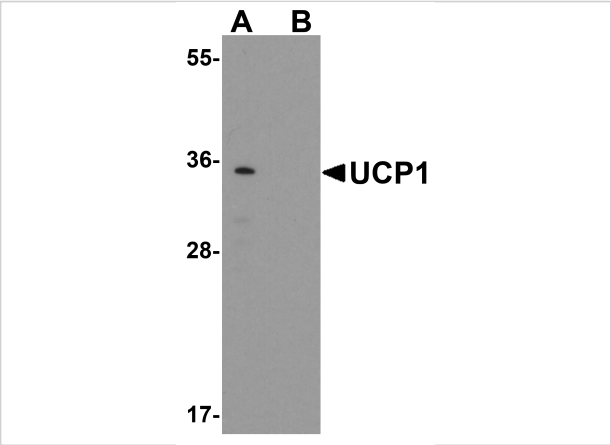
CATALOG NUMBER: 7697

Specifications

| | |
|----------------------------|--|
| Host Species | Rabbit |
| Species Reactivity | Human, Mouse, Rat |
| Immunogen | UCP1 antibody was raised against a 17 amino acid peptide near the carboxy terminus of human UCP1 (GenBank accession). The immunogen is located within the last 50 amino acids of UCP1. |
| Conjugate | Unconjugated |
| Tested Applications | ELISA, IHC-P, WB |
| User Note | Optimal dilutions for each application to be determined by the researcher. |
| Specificity | UCP1 antibody is human, mouse and rat reactive. |
| Predicted Molecular Weight | Predicted: 34 kDa Observed: 35 kDa |

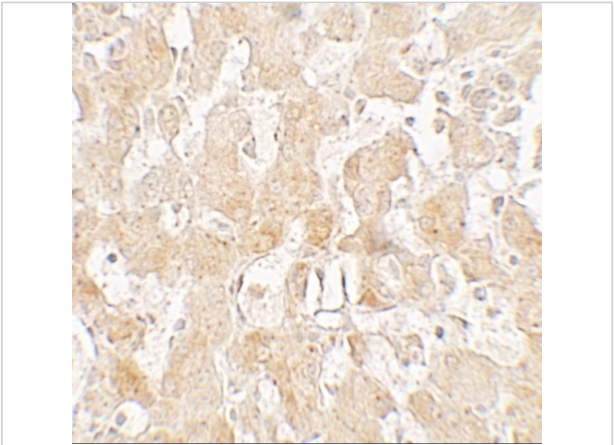
Properties

| | |
|--------------------|---|
| Purification | UCP1 antibody is affinity chromatography purified via peptide column. |
| Clonality | Polyclonal |
| Isotype | IgG |
| Physical State | Liquid |
| Buffer | UCP1 antibody is supplied in PBS containing 0.02% sodium azide. |
| Concentration | 1 mg/mL |
| Storage Conditions | UCP1 antibody can be stored at 4°C for three months and -20°C, stable for up to one year. |



UCP1 Antibody 1

Western blot analysis of UCP1 in human brain tissue lysate with UCP1 antibody at 1 µg/mL in (A) the absence and (B) the presence of blocking peptide.



UCP1 Antibody 2

Immunohistochemistry of UCP1 in human liver tissue with UCP1 antibody at 2.5 µg/mL.

Disclaimer

| | |
|------------|--|
| Disclaimer | Optimal dilutions/concentrations should be determined by the end user. The information provided is a guideline for product use. This product is for research use only. |
|------------|--|

For research use only. For additional information, visit ProSci's [Terms and Conditions Page](#).