

## GLIPR1L1 Antibody

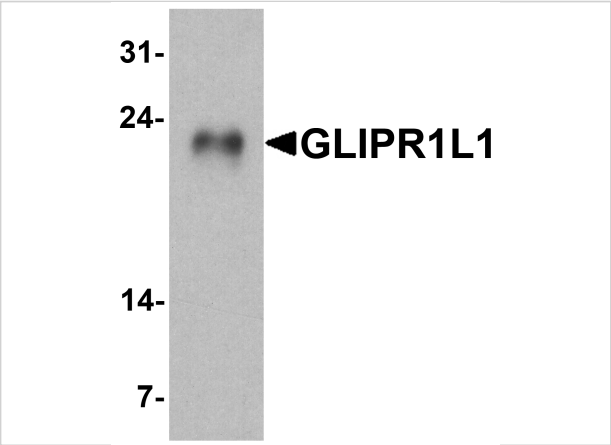
CATALOG NUMBER: 7625

### Specifications

Host Species	Rabbit
Species Reactivity	Human
Immunogen	GLIPR1L1 antibody was raised against an 18 amino acid peptide near the amino terminus of human GLIPR1L1 . The immunogen is located within amino acids 20 - 70 of GLIPR1L1.
Conjugate	Unconjugated
Tested Applications	ELISA, IF, IHC-P, WB
User Note	Optimal dilutions for each application to be determined by the researcher.
Specificity	GLIPR1L1 antibody is human specific. At least two isoforms of GLIPR1L1 are known to exist; this antibody will detect both isoforms. This antibody is predicted to not cross-react with other GLIPR or GLIPR-like proteins.
Predicted Molecular Weight	Predicted: 26 kDa Observed: 23 kDa

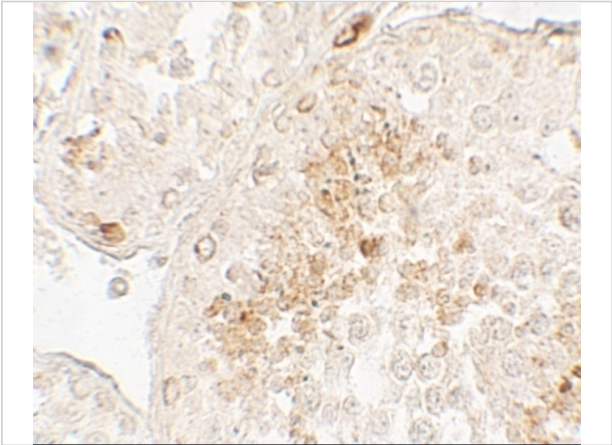
### Properties

Purification	GLIPR1L1 antibody is affinity chromatography purified via peptide column.
Clonality	Polyclonal
Isotype	IgG
Physical State	Liquid
Buffer	GLIPR1L1 antibody is supplied in PBS containing 0.02% sodium azide.
Concentration	1 mg/mL
Storage Conditions	GLIPR1L1 antibody can be stored at 4°C for three months and -20°C, stable for up to one year.



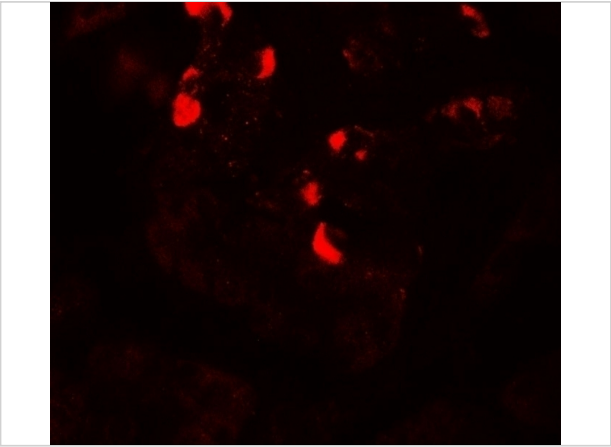
GLIPR1L1 Antibody 1

Western blot analysis of GLIPR1L1 in human testis tissue lysate with GLIPR1L1 antibody at 1 µg/ml.



GLIPR1L1 Antibody 2

Immunohistochemistry of GLIPR1L1 in human testis tissue with GLIPR1L1 antibody at 5 µg/mL.



GLIPR1L1 Antibody 3

Immunofluorescence of GLIPR1L1 in human testis tissue with GLIPR1L1 antibody at 20 µg/mL.

Disclaimer

Disclaimer	Optimal dilutions/concentrations should be determined by the end user. The information provided is a guideline for product use. This product is for research use only.
------------	--

For research use only. For additional information, visit ProSci's [Terms and Conditions Page](#).