

Betatrophin Antibody

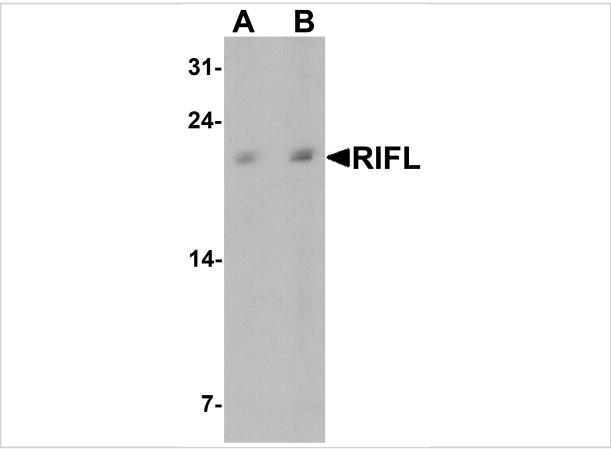
CATALOG NUMBER: 7619

Specifications

Host Species	Rabbit
Species Reactivity	Human, Mouse, Rat
Immunogen	Betatrophin antibody was raised against a 16 amino acid peptide near the amino terminus of human Betatrophin. The immunogen is located within amino acids 40 - 90 of Betatrophin.
Conjugate	Unconjugated
Tested Applications	ELISA, IF, IHC-P, WB
User Note	Optimal dilutions for each application to be determined by the researcher.
Specificity	Betatrophin antibody is human, mouse and rat reactive. At least three isoforms of Betatrophin are known to exist; this antibody will detect the two largest isoforms.
Predicted Molecular Weight	Predicted: 22 kDa Observed: 22 kDa

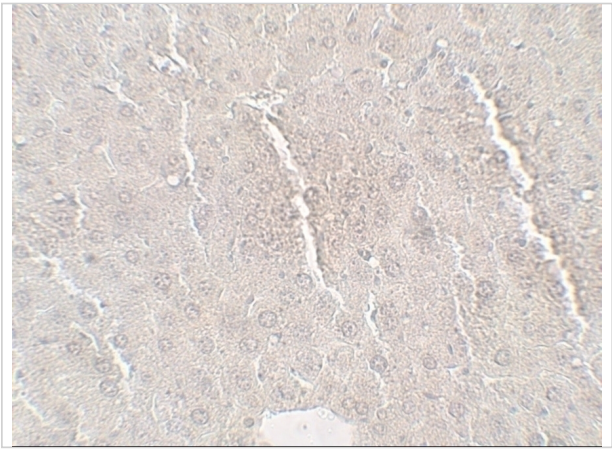
Properties

Purification	Betatrophin antibody is affinity chromatography purified via peptide column.
Clonality	Polyclonal
Isotype	IgG
Physical State	Liquid
Buffer	Betatrophin antibody is supplied in PBS containing 0.02% sodium azide.
Concentration	1 mg/mL
Storage Conditions	Betatrophin antibody can be stored at 4°C for three months and -20°C, stable for up to one year.



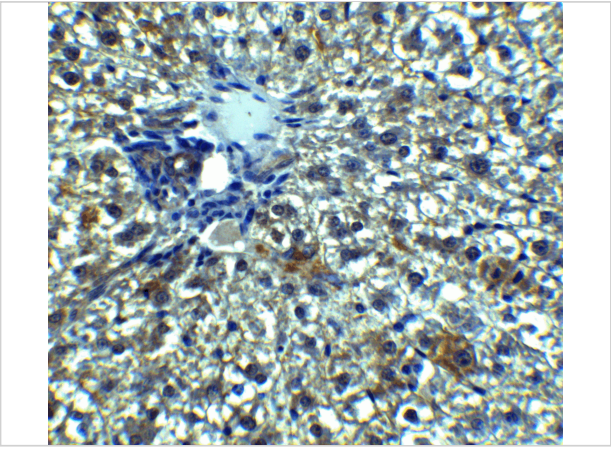
Betatrophin Antibody 1

Western blot analysis of Betatrophin in rat liver tissue lysate with Betatrophin antibody at (A) 1 and (B) 2 µg/mL.



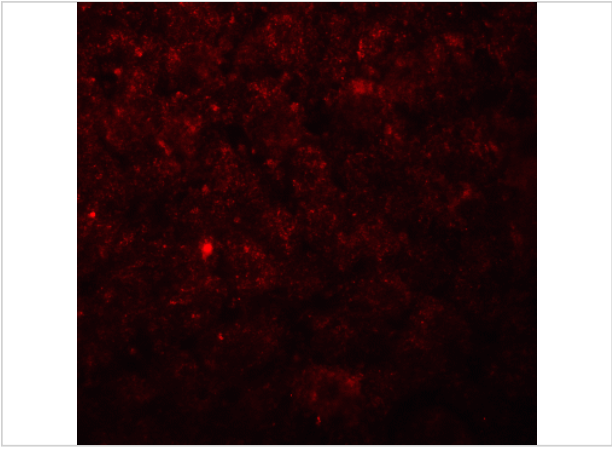
Betatrophin Antibody 2

Immunohistochemistry of Betatrophin in mouse liver tissue with Betatrophin antibody at 5 µg/mL.



Betatrophin Antibody 3

Immunohistochemistry of Betatrophin in rat liver tissue with Betatrophin Antibody at 5 µg/mL.



Betatrophin Antibody 4

Immunofluorescence of Betatrophin in rat liver tissue with Betatrophin Antibody at 20 µg/mL.

Disclaimer

Disclaimer	Optimal dilutions/concentrations should be determined by the end user. The information provided is a guideline for product use. This product is for research use only.
------------	--

For research use only. For additional information, visit ProSci's [Terms and Conditions Page](#).