

## THAP11 Antibody

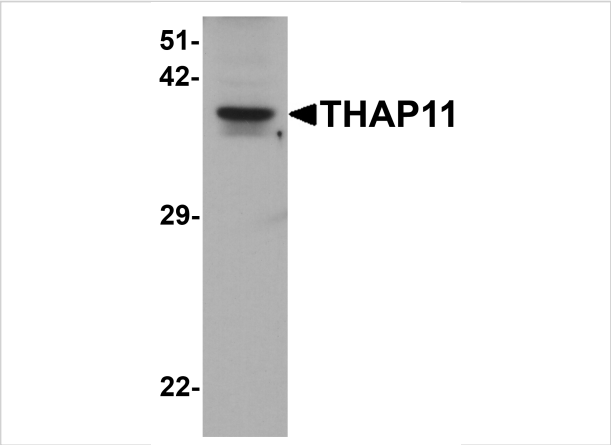
CATALOG NUMBER: 7613

### Specifications

Host Species	Rabbit
Species Reactivity	Human, Mouse, Rat
Homology	Predicted species reactivity based on immunogen sequence: Bovine: (100%)
Immunogen	THAP11 antibody was raised against a 17 amino acid peptide near the carboxy terminus of human THAP11. The immunogen is located within the last 50 amino acids of THAP11.
Conjugate	Unconjugated
Tested Applications	ELISA, WB
User Note	Optimal dilutions for each application to be determined by the researcher.
Specificity	THAP11 antibody is human, mouse and rat reactive.
Predicted Molecular Weight	Predicted: 35 kDa Observed: 38 kDa

### Properties

Purification	THAP11 antibody is affinity chromatography purified via peptide column.
Clonality	Polyclonal
Isotype	IgG
Physical State	Liquid
Buffer	THAP11 antibody is supplied in PBS containing 0.02% sodium azide.
Concentration	1 mg/mL
Storage Conditions	THAP11 antibody can be stored at 4°C for three months and -20°C, stable for up to one year.



THAP11 Antibody 1

Western blot analysis of THAP11 in human brain tissue lysate with THAP11 antibody at 1 µg/ml.

Disclaimer

Disclaimer	Optimal dilutions/concentrations should be determined by the end user. The information provided is a guideline for product use. This product is for research use only.
------------	--

For research use only. For additional information, visit ProSci's [Terms and Conditions Page](#).