

RPSA Antibody

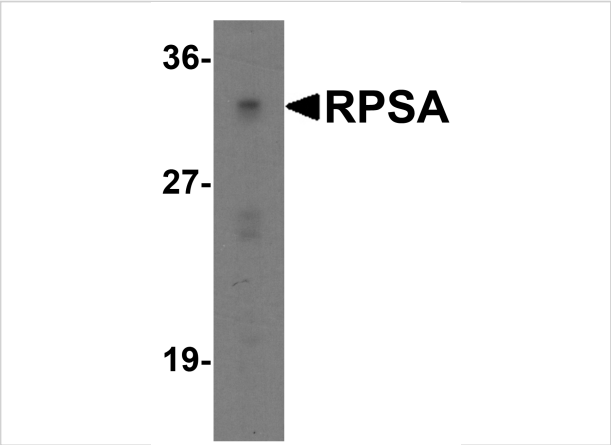
CATALOG NUMBER: 7605

Specifications

| | |
|----------------------------|---|
| Host Species | Rabbit |
| Species Reactivity | Human, Mouse |
| Homology | Predicted species reactivity based on immunogen sequence: Pig: (100%), Bovine: (100%), Chicken: (100%), Rat: (100%), Sheep: (100%) |
| Immunogen | RPSA antibody was raised against a 17 amino acid peptide near the carboxy terminus of human RPSA. The immunogen is located within amino acids 190 - 240 of RPSA. |
| Conjugate | Unconjugated |
| Tested Applications | ELISA, IF, IHC-P, WB |
| User Note | Optimal dilutions for each application to be determined by the researcher. |
| Specificity | RPSA antibody is human, mouse and rat reactive. |
| Predicted Molecular Weight | Predicted: 32 kDa Observed: 32 kDa |

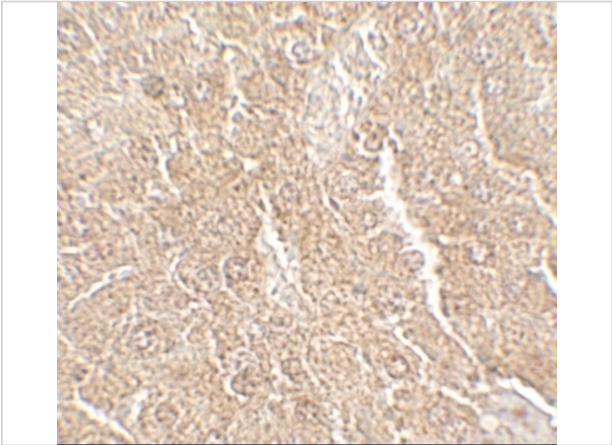
Properties

| | |
|--------------------|---|
| Purification | RPSA antibody is affinity chromatography purified via peptide column. |
| Clonality | Polyclonal |
| Isotype | IgG |
| Physical State | Liquid |
| Buffer | RPSA antibody is supplied in PBS containing 0.02% sodium azide. |
| Concentration | 1 mg/mL |
| Storage Conditions | RPSA antibody can be stored at 4°C for three months and -20°C, stable for up to one year. |



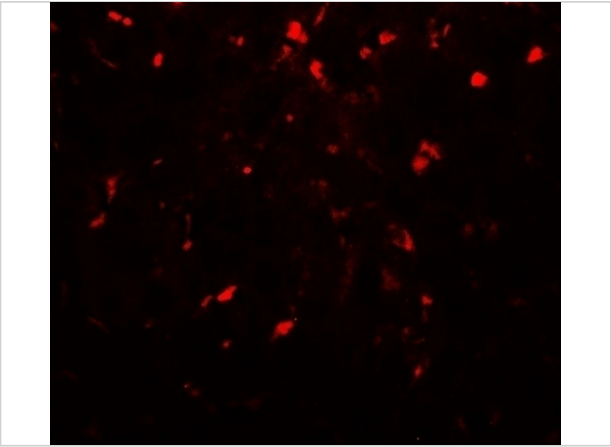
RPSA Antibody 1

Western blot analysis of RPSA in Caco-2 cell lysate with RPSA antibody at 1 µg/ml.



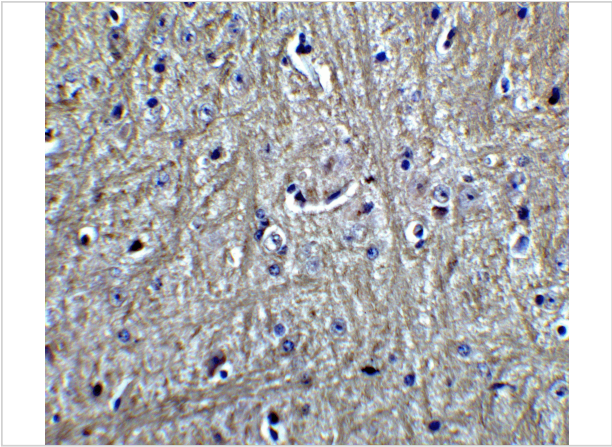
RPSA Antibody 2

Immunohistochemistry of RPSA in mouse liver tissue with RPSA antibody at 5 µg/mL.



RPSA Antibody 3

Immunofluorescence of RPSA in mouse liver tissue with RPSA antibody at 20 µg/mL.



RPSA Antibody 4

Immunohistochemistry of RPSA in mouse brain tissue with RPSA Antibody at 5 µg/mL.

Disclaimer

| | |
|------------|--|
| Disclaimer | Optimal dilutions/concentrations should be determined by the end user. The information provided is a guideline for product use. This product is for research use only. |
|------------|--|

For research use only. For additional information, visit ProSci's [Terms and Conditions Page](#).