

alpha-Tubulin Antibody

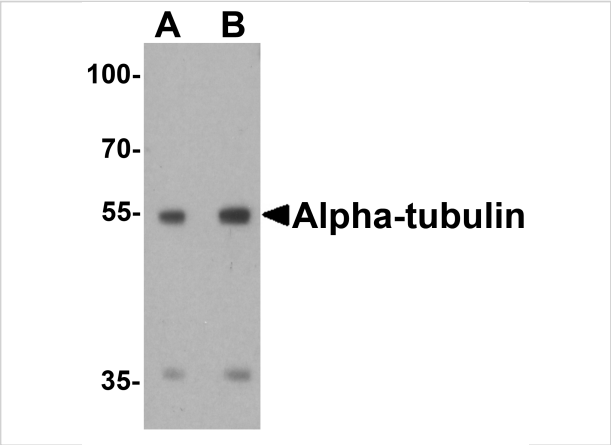
CATALOG NUMBER: 7597

Specifications

Host Species	Rabbit
Species Reactivity	Human, Mouse, Rat
Immunogen	alpha-Tubulin antibody was raised against an 18 amino acid peptide near the carboxy terminus of human alpha-Tubulin
Conjugate	Unconjugated
Tested Applications	ELISA, IF, IHC-P, WB
User Note	Optimal dilutions for each application to be determined by the researcher.
Specificity	alpha-Tubulin antibody is human, mouse and rat reactive.
Predicted Molecular Weight	Predicted: 50 kDa Observed: 54 kDa

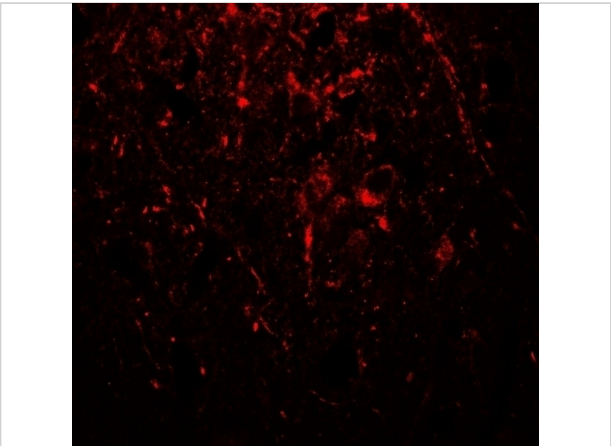
Properties

Purification	alpha-Tubulin antibody is affinity chromatography purified via peptide column.
Clonality	Polyclonal
Isotype	IgG
Physical State	Liquid
Buffer	alpha-Tubulin antibody is supplied in PBS containing 0.02% sodium azide.
Concentration	1 mg/mL
Storage Conditions	alpha-Tubulin antibody can be stored at 4°C for three months and -20°C, stable for up to one year.



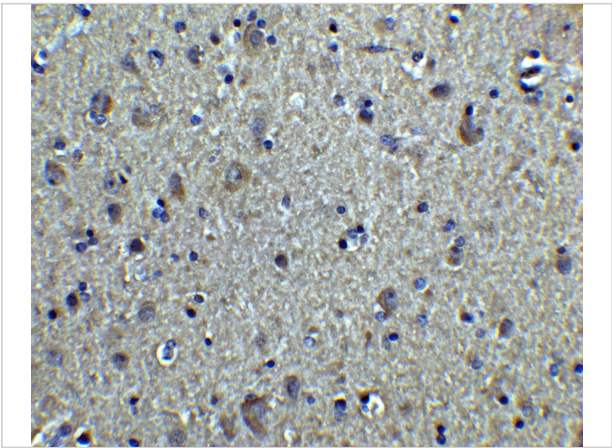
alpha-Tubulin Antibody 1

Western blot analysis of alpha-Tubulin in 293, Daudi, HeLa, HepG2, Jurkat, K562, NH3T3, Raji, Ramos, U937, Human brain, Mouse brain, Rat Brain, Rabbit Brain, Rabbit Spleen, Zebrafish, Mouse Liver a...



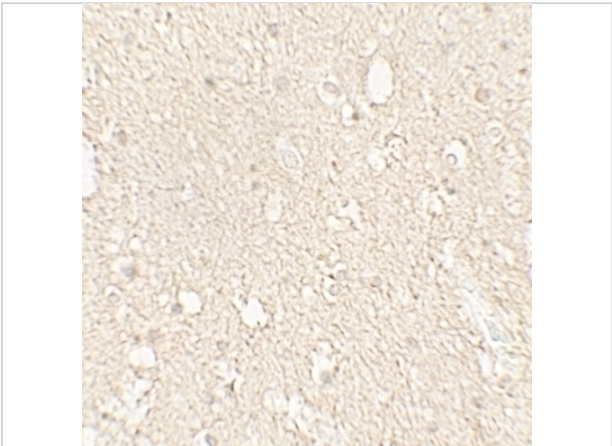
alpha-Tubulin Antibody 3

Immunofluorescence of alpha-Tubulin in human brain tissue with alpha-Tubulin antibody at 20 µg/mL.



alpha-Tubulin Antibody 2

Immunohistochemistry of alpha-Tubulin in human brain tissue with alpha-Tubulin antibody at 2.5 µg/mL.



alpha-Tubulin Antibody 4

Immunohistochemistry of alpha-Tubulin in human brain tissue with alpha-Tubulin antibody at 5 µg/mL.

Disclaimer

Disclaimer	Optimal dilutions/concentrations should be determined by the end user. The information provided is a guideline for product use. This product is for research use only.
------------	--

For research use only. For additional information, visit ProSci's [Terms and Conditions Page](#).