

LRRC26 Antibody

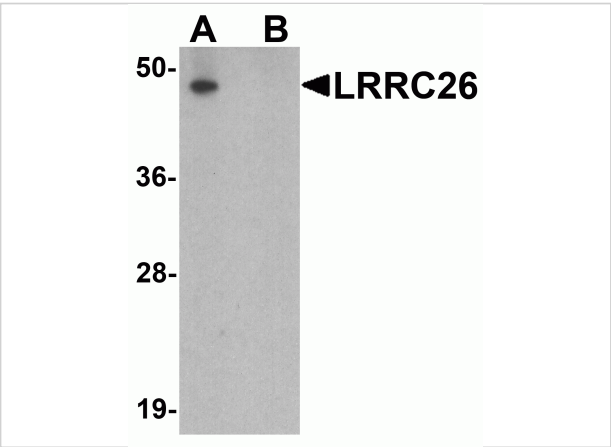
CATALOG NUMBER: 7539

Specifications

Host Species	Rabbit
Species Reactivity	Human
Immunogen	LRRC26 antibody was raised against an 18 amino acid peptide near the carboxy terminus of human LRRC26. The immunogen is located within the last 50 amino acids of LRRC26.
Conjugate	Unconjugated
Tested Applications	ELISA, IF, IHC-P, WB
User Note	Optimal dilutions for each application to be determined by the researcher.
Specificity	LRRC26 antibody is human specific.
Predicted Molecular Weight	Predicted: 37 kDa Observed: 48 kDa

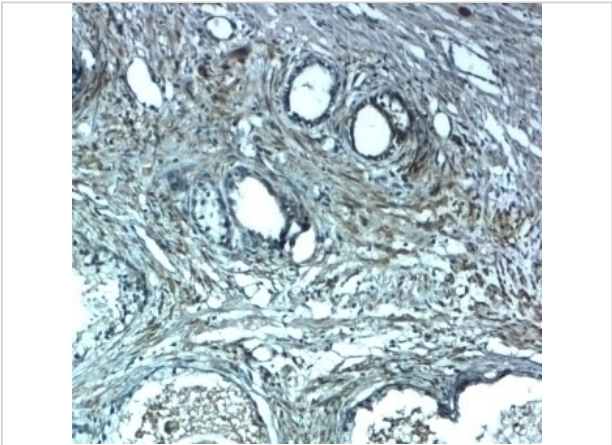
Properties

Purification	LRRC26 antibody is affinity chromatography purified via peptide column.
Clonality	Polyclonal
Isotype	IgG
Physical State	Liquid
Buffer	LRRC26 antibody is supplied in PBS containing 0.02% sodium azide.
Concentration	1 mg/mL
Storage Conditions	LRRC26 antibody can be stored at 4°C for three months and -20°C, stable for up to one year.



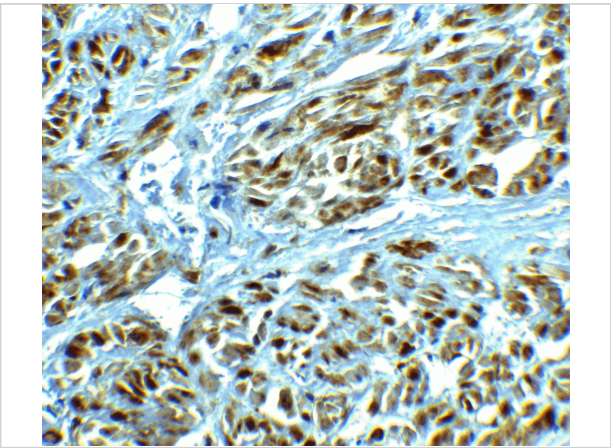
LRRC26 Antibody 1

Western blot analysis of LRRC26 in human prostate tissue lysate with LRRC26 antibody at 0.5 µg/ml in (A) the absence and (B) the presence of blocking peptide.



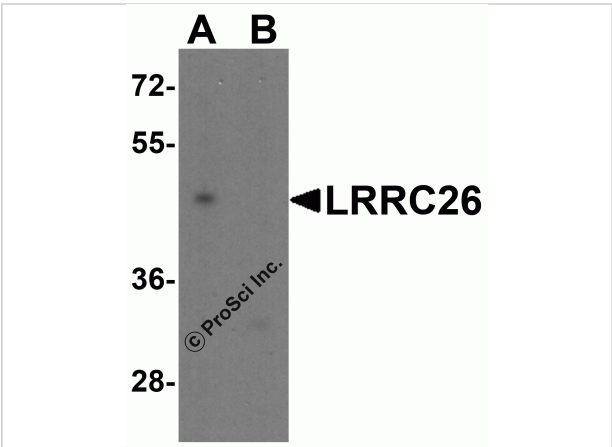
LRRC26 Antibody 2

Immunohistochemistry of LRRC26 in human prostate tissue with LRRC26 antibody at 2.5 µg/mL.



LRRC26 Antibody 3

Immunohistochemistry of LRRC26 in human prostate tissue with LRRC26 antibody at 2.5 µg/ml.



LRRC26 Antibody 4

Western blot analysis of LRRC26 in Jurkat cell lysate with LRRC26 antibody at 0.5 µg/ml in (A) the absence and (B) the presence of blocking peptide.

Disclaimer

Disclaimer	Optimal dilutions/concentrations should be determined by the end user. The information provided is a guideline for product use. This product is for research use only.
------------	--

For research use only. For additional information, visit ProSci's [Terms and Conditions Page](#).