

## KDM1B Antibody

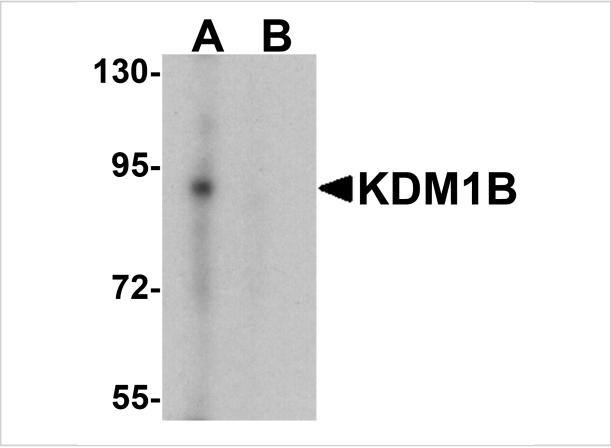
CATALOG NUMBER: 7535

### Specifications

Host Species	Rabbit
Species Reactivity	Human, Mouse
Immunogen	KDM1B antibody was raised against a 17 amino acid peptide near the amino terminus of human KDM1B. The immunogen is located within amino acids 80 - 130 of KDM1B.
Conjugate	Unconjugated
Tested Applications	ELISA, WB
User Note	Optimal dilutions for each application to be determined by the researcher.
Specificity	KDM1B antibody is human, mouse and rat reactive. At least two isoforms of KDM1B are known to exist; this KDM1B antibody will detect both isoforms.
Predicted Molecular Weight	Predicted: 90 kDa Observed: 90 kDa

### Properties

Purification	KDM1B antibody is affinity chromatography purified via peptide column.
Clonality	Polyclonal
Isotype	IgG
Physical State	Liquid
Buffer	KDM1B antibody is supplied in PBS containing 0.02% sodium azide.
Concentration	1 mg/mL
Storage Conditions	KDM1B antibody can be stored at 4°C for three months and -20°C, stable for up to one year.



KDM1B Antibody 1

Western blot analysis of KDM1B in K562 cell lysate with KDM1B antibody at 0.5 µg/ml in (A) the absence and (B) the presence of blocking peptide

Disclaimer

Disclaimer	Optimal dilutions/concentrations should be determined by the end user. The information provided is a guideline for product use. This product is for research use only.
------------	--

For research use only. For additional information, visit ProSci's [Terms and Conditions Page](#).