



ProSci Incorporated
12170 Flint Place
Poway, CA 92064, USA
prosci-inc.com

P: +1 (888) 513-9525
Local: +1 (858) 513-2638
Fax: +1 (858) 513-2692

customercare@prosci-inc.com
techsupport@prosci-inc.com

IL-36B Antibody

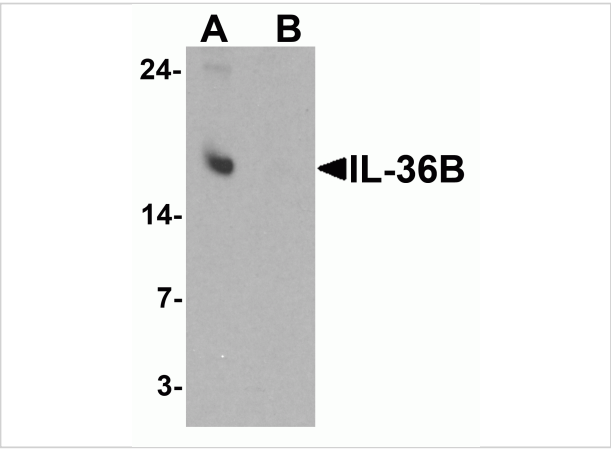
CATALOG NUMBER: 7507

Specifications

Host Species	Rabbit
Species Reactivity	Human
Immunogen	IL-36B antibody was raised against a 16 amino acid peptide near the carboxy terminus of human IL-36B. The immunogen is located within the last 50 amino acids of IL-36B.
Conjugate	Unconjugated
Tested Applications	ELISA, IF, IHC-P, WB
User Note	Optimal dilutions for each application to be determined by the researcher.
Specificity	IL-36B antibody is human specific. At least two isoforms of IL-36B are known to exist; this antibody will only detect the longer isoform. IL-36B antibody will not cross-react with IL-36A or IL-36G.
Predicted Molecular Weight	Predicted: 18 kDa Observed: 17 kDa

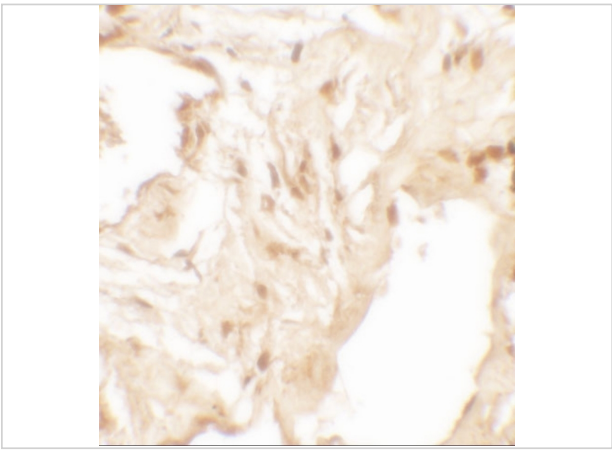
Properties

Purification	IL-36B antibody is affinity chromatography purified via peptide column.
Clonality	Polyclonal
Isotype	IgG
Physical State	Liquid
Buffer	IL-36B antibody is supplied in PBS containing 0.02% sodium azide.
Concentration	1 mg/mL
Storage Conditions	IL-36B antibody can be stored at 4°C for three months and -20°C, stable for up to one year.



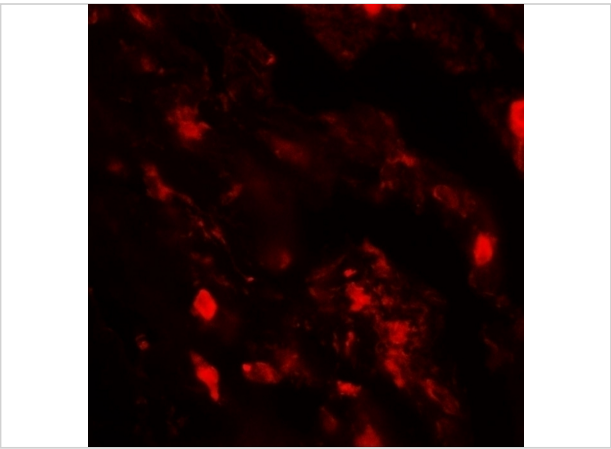
IL-36B Antibody 1

Western blot analysis of IL-36B in A549 cell lysate with IL-36B antibody at 1 µg/ml in (A) the absence and (B) the presence of blocking peptide.



IL-36B Antibody 2

Immunohistochemistry of IL-36B in human lung tissue with IL-36B antibody at 2.5 µg/mL.



IL-36B Antibody 3

Immunofluorescence of IL-36B in human lung tissue with IL-36B antibody at 20 µg/mL.

Disclaimer

Disclaimer	Optimal dilutions/concentrations should be determined by the end user. The information provided is a guideline for product use. This product is for research use only.
------------	--

For research use only. For additional information, visit ProSci's [Terms and Conditions Page](#).