

## IL-9 Antibody

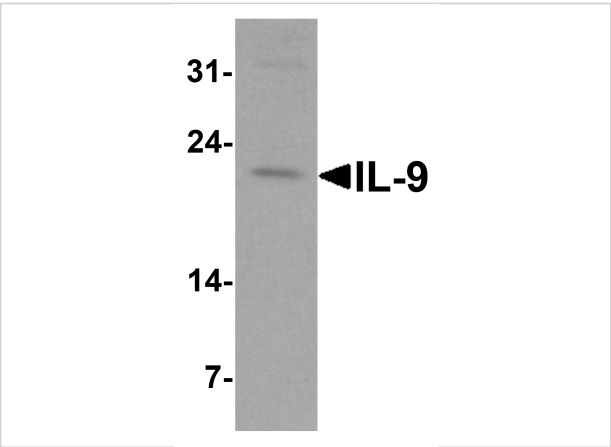
CATALOG NUMBER: 7495

### Specifications

Host Species	Rabbit
Species Reactivity	Human
Immunogen	Anti-IL-9 antibody ( <b>7495</b> ) was raised against a peptide corresponding to 16 amino acids near the carboxy terminus of human IL-9. The immunogen is located within the last 50 amino acids of IL-9.
Conjugate	Unconjugated
Tested Applications	ELISA, IF, IHC-P, WB
User Note	Optimal dilutions for each application to be determined by the researcher.
Specificity	IL-9 antibody is human specific. IL-9 antibody is predicted to no cross-react with IL-7.
Predicted Molecular Weight	Predicted: 16kD Observed: 22 kD (Post-modification: 4 N-linked glycosylations)

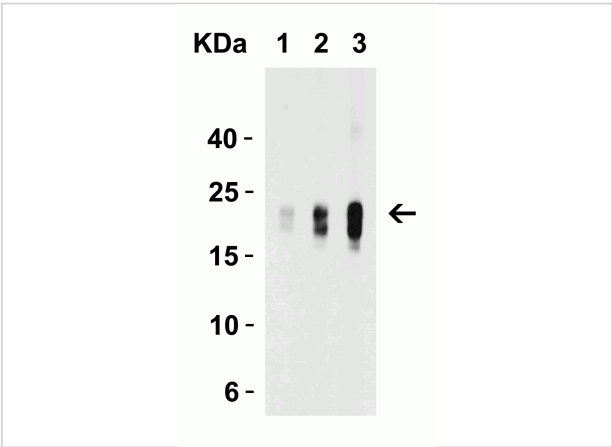
### Properties

Purification	IL-9 Antibody is affinity chromatography purified via peptide column.
Clonality	Polyclonal
Isotype	IgG
Physical State	Liquid
Buffer	IL-9 Antibody is supplied in PBS containing 0.02% sodium azide.
Concentration	1 mg/mL
Storage Conditions	IL-9 antibody can be stored at 4°C for three months and -20°C, stable for up to one year.



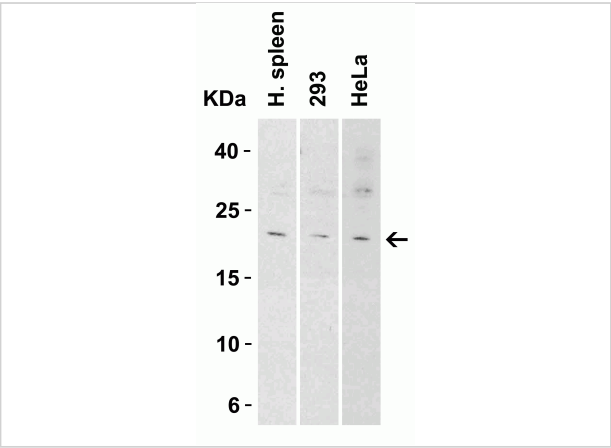
### IL-9 Antibody 1

**Figure 1 Western Blot Validation in Human Spleen Tissue Lysate**  
 Loading: 15 µg of lysates per lane. Antibodies: IL-9, 7495 (1 µg/mL), 1h incubation at RT in 5% NFDm/TBST. Secondary...



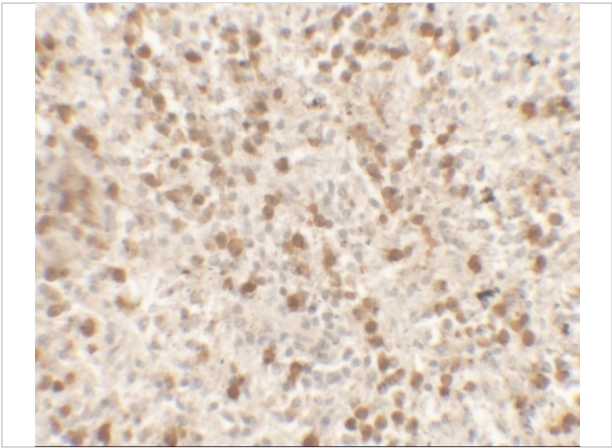
### IL-9 Antibody 2

**Figure 2 Western Blot Validation with Recombinant Protein**  
 Loading: 30 ng of human IL-9 recombinant protein per lane. Antibodies: IL-9, 7495 (Lane 1: 1 µg/mL, Lane 2: 2 µg/mL and ...



### IL-9 Antibody 3

**Figure 3 Western Blot Validation in Tissue and Cell Lines**  
 Loading: 15 µg of lysates per lane. Antibodies: IL-9, 7495 (1 µg/mL), 1h incubation at RT in 5% NFDm/TBST. Secondary: Goa...



### IL-9 Antibody 4

**Figure 4 Immunohistochemistry Validation of IL-9 in Human Spleen Tissue**  
 Immunohistochemical analysis of paraffin-embedded human spleen tissue using anti-IL-9 antibody (7495) a...

## Disclaimer

Disclaimer	Optimal dilutions/concentrations should be determined by the end user. The information provided is a guideline for product use. This product is for research use only.
------------	--

For research use only. For additional information, visit ProSci's [Terms and Conditions Page](#).