

IL-28B Antibody

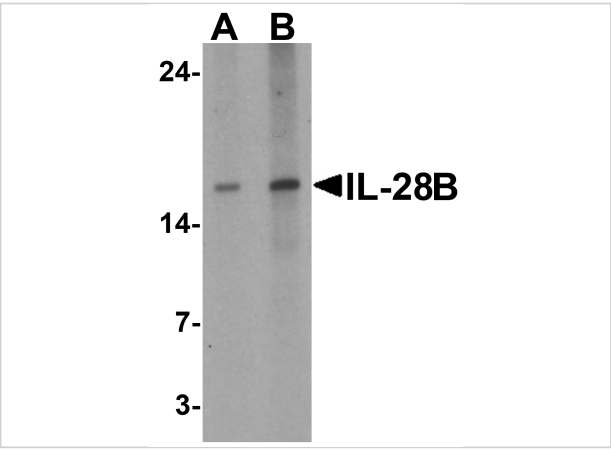
CATALOG NUMBER: 7479

Specifications

Host Species	Rabbit
Species Reactivity	Human
Immunogen	IL-28B antibody was raised against a 17 amino acid peptide near the center of human IL-28B. The immunogen is located within amino acids 120 - 170 of IL-28B .
Conjugate	Unconjugated
Tested Applications	ELISA, IF, WB
User Note	Optimal dilutions for each application to be determined by the researcher.
Specificity	IL-28B antibody is human specific. IL-28B antibody may cross-react with IL-28A and IL-29.
Predicted Molecular Weight	Predicted: 20 kDa Observed: 16kDa

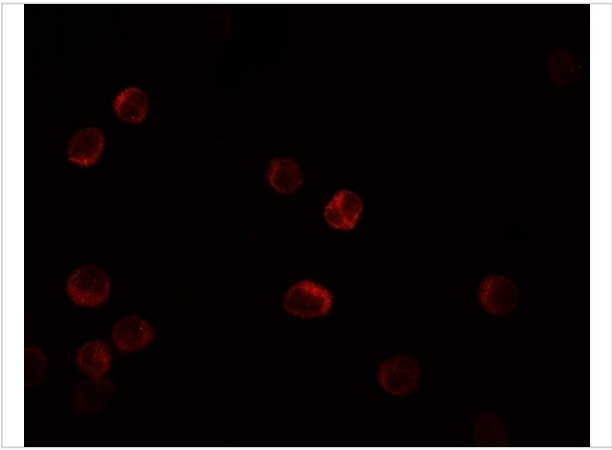
Properties

Purification	IL-28B Antibody is affinity chromatography purified via peptide column.
Clonality	Polyclonal
Isotype	IgG
Physical State	Liquid
Buffer	IL-28B Antibody is supplied in PBS containing 0.02% sodium azide.
Concentration	1 mg/mL
Storage Conditions	IL-28B antibody can be stored at 4°C for three months and -20°C, stable for up to one year.



IL-28B Antibody 1

Western blot analysis of IL-28B in HeLa cell lysate with IL-28B antibody at (A) 1 and (B) 2 µg/ml.



IL-28B Antibody 2

Immunofluorescence of IL-28B in HeLa cells with IL-28B antibody at 5 µg/mL.

Disclaimer

Disclaimer	Optimal dilutions/concentrations should be determined by the end user. The information provided is a guideline for product use. This product is for research use only.
------------	--

For research use only. For additional information, visit ProSci's [Terms and Conditions Page](#).