

TBX21 Antibody

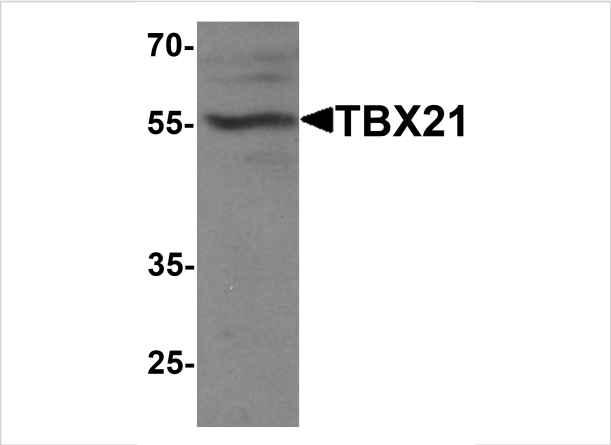
CATALOG NUMBER: 7477

Specifications

Host Species	Rabbit
Species Reactivity	Human, Mouse
Immunogen	TBX21 antibody was raised against a 19 amino acid peptide near the carboxy terminus of human TBX2. The immunogen is located within the last 50 amino acids of TBX21 .
Conjugate	Unconjugated
Tested Applications	ELISA, IF, WB
User Note	Optimal dilutions for each application to be determined by the researcher.
Specificity	TBX21 antibody is human and mouse reactive.
Predicted Molecular Weight	Predicted: 59 kDa Observed: 55kDa

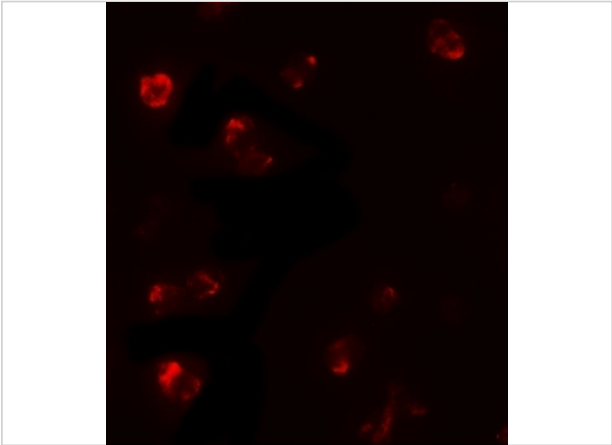
Properties

Purification	TBX21 Antibody is affinity chromatography purified via peptide column.
Clonality	Polyclonal
Isotype	IgG
Physical State	Liquid
Buffer	TBX21 Antibody is supplied in PBS containing 0.02% sodium azide.
Concentration	1 mg/mL
Storage Conditions	TBX21 antibody can be stored at 4°C for three months and -20°C, stable for up to one year.



TBX21 Antibody 1

Western blot analysis of TBX21 in 293 cell lysate with TBX21 antibody at 1 µg/ml.



TBX21 Antibody 2

Immunofluorescence of TBX21 in 293 cells with TBX21 antibody at 5 µg/mL.

Disclaimer

Disclaimer	Optimal dilutions/concentrations should be determined by the end user. The information provided is a guideline for product use. This product is for research use only.
-------------------	--

For research use only. For additional information, visit ProSci's [Terms and Conditions Page](#).