



ProSci Incorporated
12170 Flint Place
Poway, CA 92064, USA
prosci-inc.com

P: +1 (888) 513-9525
Local: +1 (858) 513-2638
Fax: +1 (858) 513-2692

customercare@prosci-inc.com
techsupport@prosci-inc.com

Mouse Normal Tissue Blot II

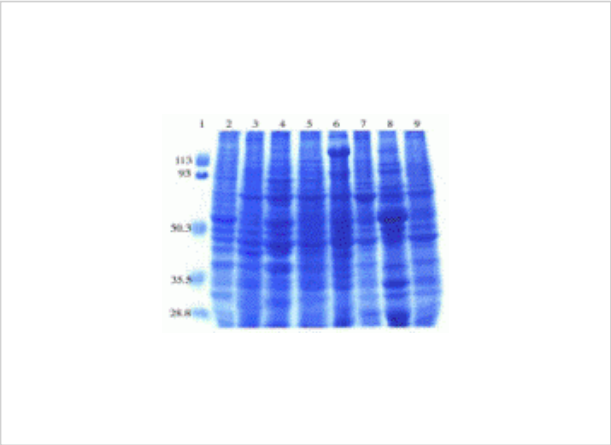
CATALOG NUMBER: 1562

Specifications

Species	Mouse
Samples Loaded	Lanes: 1, protein markers; 2, adrenal; 3, cerebellum; 4, cerebrum; 5, small intestine; 6, skeletal muscle; 7, stomach; 8, testis; and 9, thymus.
Tested Applications	WB
User Note	Note: Lysate lane order may vary; please consult accompanying shipment paperwork.

Properties

Gel Percentage	Gradient 4-20%
Storage Conditions	Store at 4°C. The blot can be reused after stripping.



Mouse Normal Tissue Blot II 1

Coomassie blue staining of mouse tissue lysates in 10% SDS-PAGE. Lanes: 1, protein markers; 2, adrenal; 3, cerebellum; 4, cerebrum; 5, small intestine; 6, skeletal muscle; 7, stomach; 8, testis; an...

Disclaimer

Disclaimer	This product is for research use only.
------------	--

For research use only. For additional information, visit ProSci's [Terms and Conditions Page](#).