

KLK4 Antibody

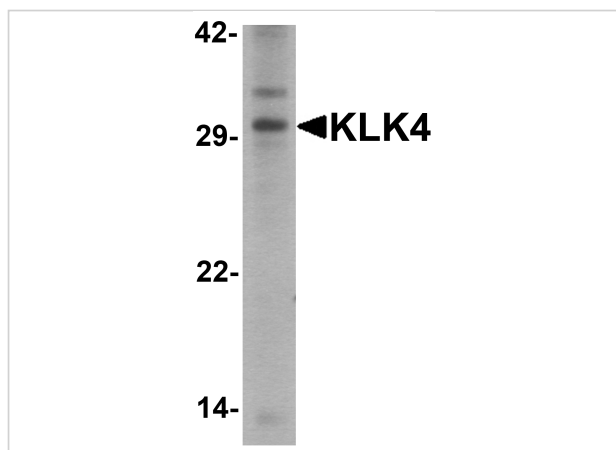
CATALOG NUMBER: 7445

Specifications

Host Species	Rabbit
Species Reactivity	Human
Immunogen	KLK4 antibody was raised against a 15 amino acid peptide near the center of human KLK4. The immunogen is located within amino acids 80 - 130 of KLK4 .
Conjugate	Unconjugated
Tested Applications	ELISA, IF, IHC-P, WB
User Note	Optimal dilutions for each application to be determined by the researcher.
Specificity	KLK4 antibody is human specific. At least three isoforms of KLK4 are known to exist.
Predicted Molecular Weight	Predicted: 28 kDa Observed: 31kDa

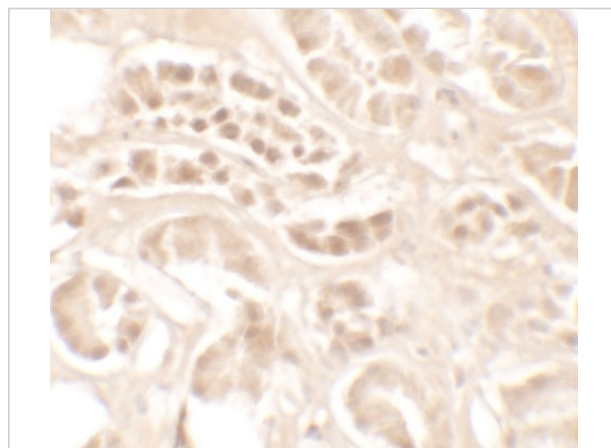
Properties

Purification	KLK4 Antibody is affinity chromatography purified via peptide column.
Clonality	Polyclonal
Isotype	IgG
Physical State	Liquid
Buffer	KLK4 Antibody is supplied in PBS containing 0.02% sodium azide.
Concentration	1 mg/mL
Storage Conditions	KLK4 antibody can be stored at 4°C for three months and -20°C, stable for up to one year.



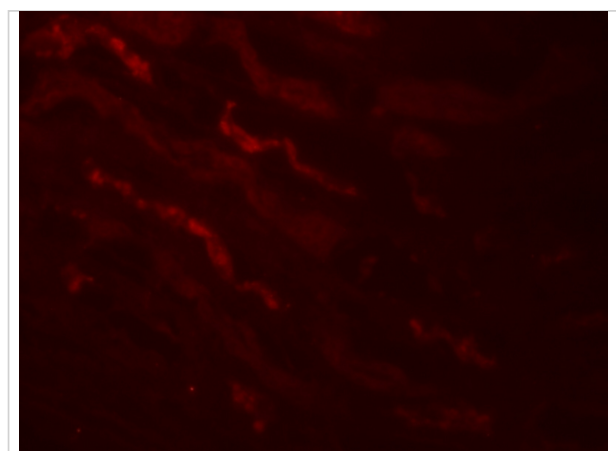
KLK4 Antibody 1

Western blot analysis of KLK4 in human kidney tissue lysate with KLK4 antibody at 1 µg/ml.



KLK4 Antibody 2

Immunohistochemistry of KLK4 in human kidney tissue with KLK4 antibody at 5 µg/mL.



KLK4 Antibody 3

Immunofluorescence of KLK4 in human kidney tissue with KLK4 antibody at 20 µg/mL.

Disclaimer

Disclaimer

Optimal dilutions/concentrations should be determined by the end user. The information provided is a guideline for product use. This product is for research use only.

For research use only. For additional information, visit ProSci's [Terms and Conditions Page](#).