

## IL-17RA Antibody

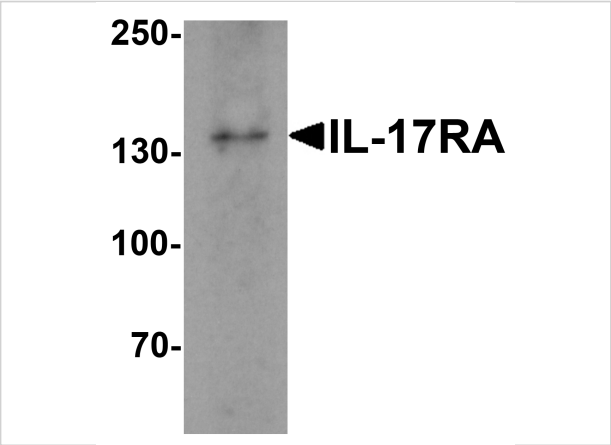
CATALOG NUMBER: 7419

### Specifications

Host Species	Rabbit
Species Reactivity	Human, Mouse, Rat
Immunogen	IL-17RA antibody was raised against an 18 amino acid peptide near the amino terminus of human IL-17RA. The immunogen is located within amino acids 150 - 200 of IL-17RA.
Conjugate	Unconjugated
Tested Applications	ELISA, IF, IHC-P, WB
User Note	Optimal dilutions for each application to be determined by the researcher.
Specificity	IL-17RA antibody is human, mouse and rat reactive. Multiple isoforms of IL-17RA are known to exist. This antibody is predicted to not cross-react with other IL-17 receptor subunits.
Predicted Molecular Weight	Predicted: 95 kDa Observed: 135 kDa

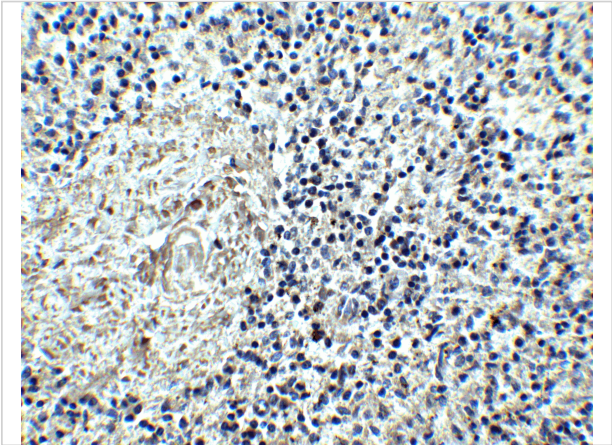
### Properties

Purification	IL-17RA Antibody is affinity chromatography purified via peptide column.
Clonality	Polyclonal
Isotype	IgG
Physical State	Liquid
Buffer	IL-17RA Antibody is supplied in PBS containing 0.02% sodium azide.
Concentration	1 mg/mL
Storage Conditions	IL-17RA antibody can be stored at 4°C up to one year. Antibodies should not be exposed to prolonged high temperatures.



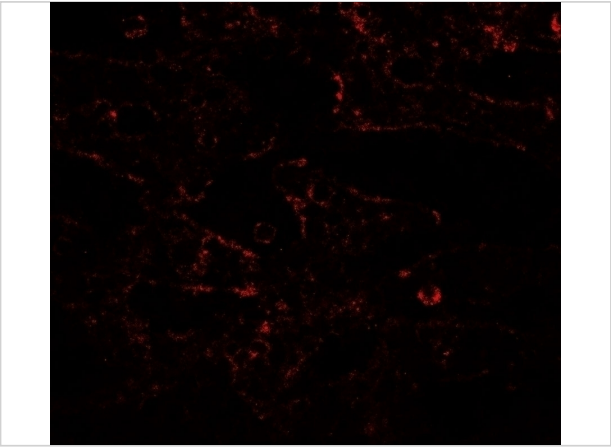
IL-17RA Antibody 1

Western blot analysis of IL17RA in A20 cell lysate with IL17RA antibody at 1 µg/mL.



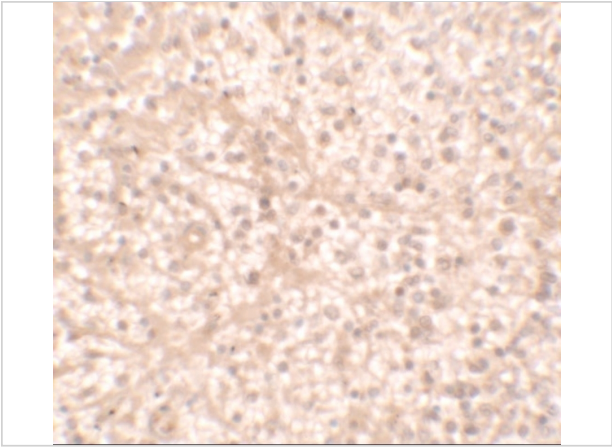
IL-17RA Antibody 2

Immunohistochemistry of IL-17RA in human spleen tissue with IL-17RA antibody at 2.5 µg/mL.



IL-17RA Antibody 3

Immunofluorescence of IL-17RA in human spleen tissue with IL-17RA antibody at 20 µg/mL.



IL-17RA Antibody 4

Immunohistochemistry of IL-17RA in human spleen tissue with IL-17RA antibody at 2.5 µg/mL.

Disclaimer

Disclaimer	Optimal dilutions/concentrations should be determined by the end user. The information provided is a guideline for product use. This product is for research use only.
------------	--

For research use only. For additional information, visit ProSci's [Terms and Conditions Page](#).