

## LPIN1 Antibody

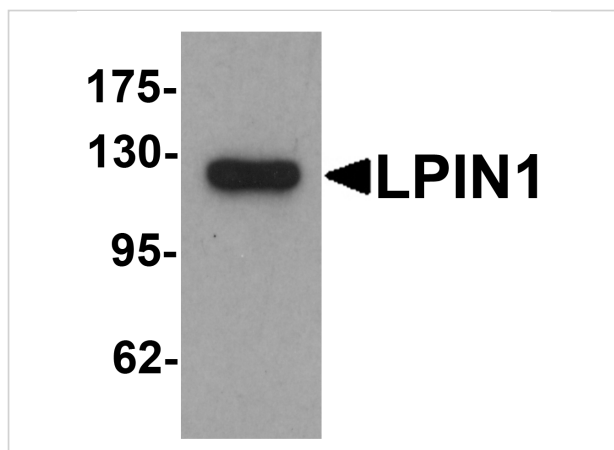
CATALOG NUMBER: 7393

### Specifications

Host Species	Rabbit
Species Reactivity	Human, Mouse, Rat
Immunogen	LPIN1 antibody was raised against an 18 amino acid peptide near the carboxy terminus of human LPIN1. The immunogen is located within the last 50 amino acids of LPIN1.
Conjugate	Unconjugated
Tested Applications	ELISA, IF, IHC-P, WB
User Note	Optimal dilutions for each application to be determined by the researcher.
Specificity	LPIN1 antibody is human and mouse reactive. At least four isoforms of LPIN1 are known to exist.
Predicted Molecular Weight	Predicted: 107 kDa Observed: 125 kDa

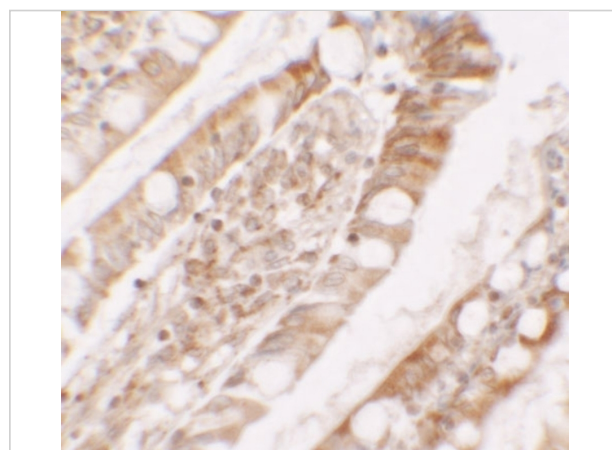
### Properties

Purification	LPIN1 Antibody is affinity chromatography purified via peptide column.
Clonality	Polyclonal
Isotype	IgG
Physical State	Liquid
Buffer	LPIN Antibody is supplied in PBS containing 0.02% sodium azide.
Concentration	1 mg/mL
Storage Conditions	LPIN antibody can be stored at 4°C for three months and -20°C, stable for up to one year.



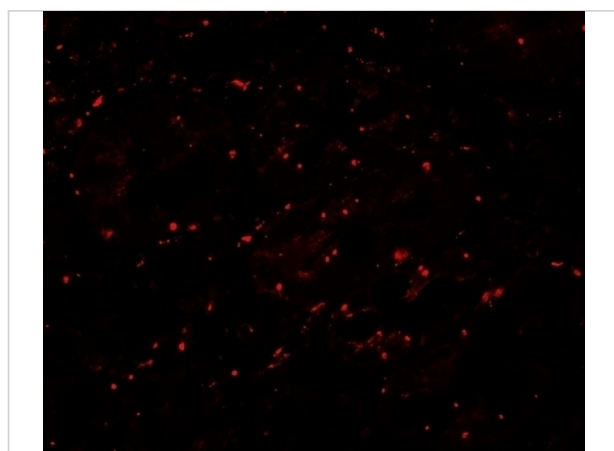
### LPIN1 Antibody 1

Western blot analysis of LPIN1 in K562 cell lysate with LPIN1 antibody at 1 µg/mL.



### LPIN1 Antibody 2

Immunohistochemistry of LPIN1 in human small intestine tissue with LPIN1 antibody at 5 µg/mL.



### LPIN1 Antibody 3

Immunofluorescence of LPIN1 in human small intestine tissue with LPIN1 antibody at 20 µg/mL.

## Disclaimer

#### Disclaimer

Optimal dilutions/concentrations should be determined by the end user. The information provided is a guideline for product use. This product is for research use only.

For research use only. For additional information, visit ProSci's [Terms and Conditions Page](#).