

AKT1S1 Antibody

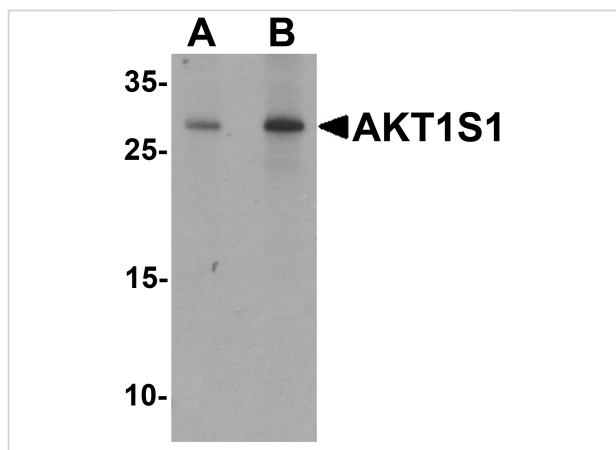
CATALOG NUMBER: 7391

Specifications

Host Species	Rabbit
Species Reactivity	Human, Mouse, Rat
Immunogen	AKT1S1 antibody was raised against a 19 amino acid peptide near the carboxy terminus of human AKT1S1. The immunogen is located within amino acids 190 - 240 of AKT1S1.
Conjugate	Unconjugated
Tested Applications	ELISA, IF, IHC-P, WB
User Note	Optimal dilutions for each application to be determined by the researcher.
Specificity	AKT1S1 antibody is human, mouse and rat reactive. At least three isoforms of AKT1S1 are known to exist.
Predicted Molecular Weight	Predicted: 30 kDa Observed: 28 kDa

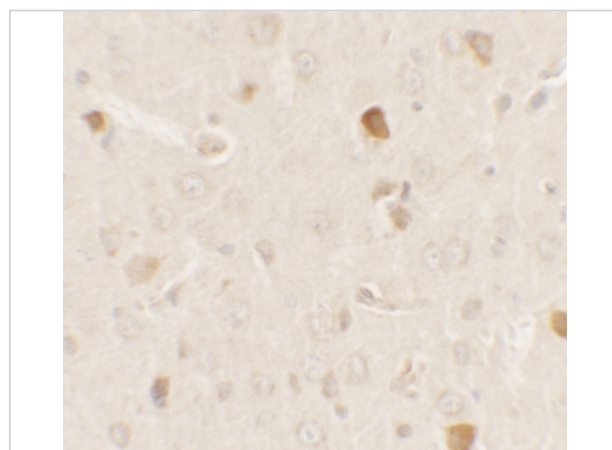
Properties

Purification	AKT1S1 Antibody is affinity chromatography purified via peptide column.
Clonality	Polyclonal
Isotype	IgG
Physical State	Liquid
Buffer	AKT1S1 Antibody is supplied in PBS containing 0.02% sodium azide.
Concentration	1 mg/mL
Storage Conditions	AKT1S1 antibody can be stored at 4°C for three months and -20°C, stable for up to one year.



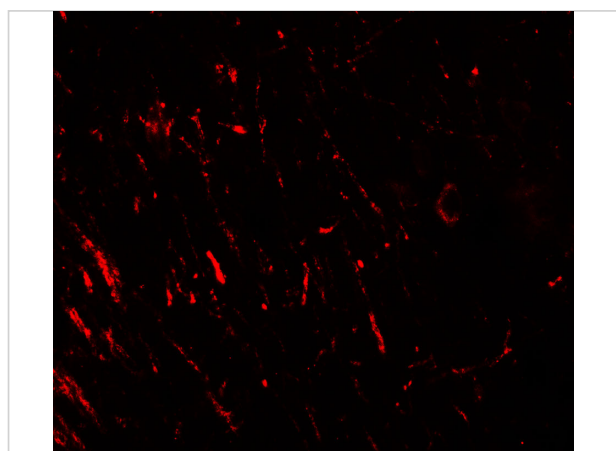
AKT1S1 Antibody 1

Western blot analysis of AKT1S1 in human brain tissue lysate with AKT1S1 antibody at (A) 1 and (B) 2 $\mu\text{g/mL}$.



AKT1S1 Antibody 2

Immunohistochemistry of AKT1S1 in rat brain tissue with AKT1S1 antibody at 2.5 $\mu\text{g/mL}$.



AKT1S1 Antibody 3

Immunofluorescence of AKT1S1 in rat brain tissue with AKT1S1 antibody at 20 $\mu\text{g/mL}$.

Disclaimer

Disclaimer

Optimal dilutions/concentrations should be determined by the end user. The information provided is a guideline for product use. This product is for research use only.

For research use only. For additional information, visit ProSci's [Terms and Conditions Page](#).