

APO-E Antibody

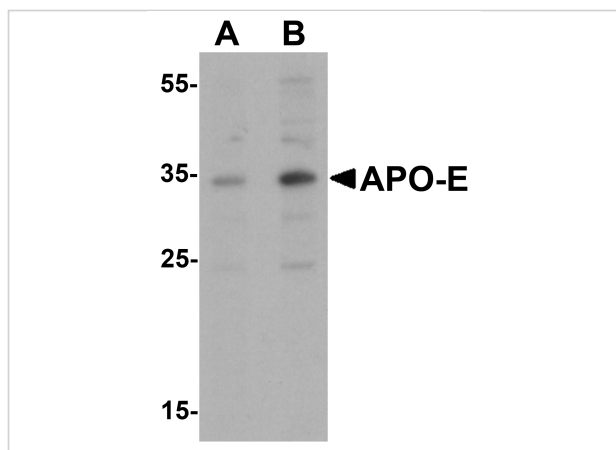
CATALOG NUMBER: 7333

Specifications

Host Species	Rabbit
Species Reactivity	Human, Mouse, Rat
Homology	Predicted species reactivity based on immunogen sequence: Pig: (78%)
Immunogen	APO-E antibody was raised against a 19 amino acid peptide near the carboxy terminus of human APO-E. The immunogen is located within amino acids 220 - 270 of APO-E.
Conjugate	Unconjugated
Tested Applications	ELISA, IF, IHC-P, WB
User Note	Optimal dilutions for each application to be determined by the researcher.
Predicted Molecular Weight	Predicted: 35 kDa Observed: 34 kDa

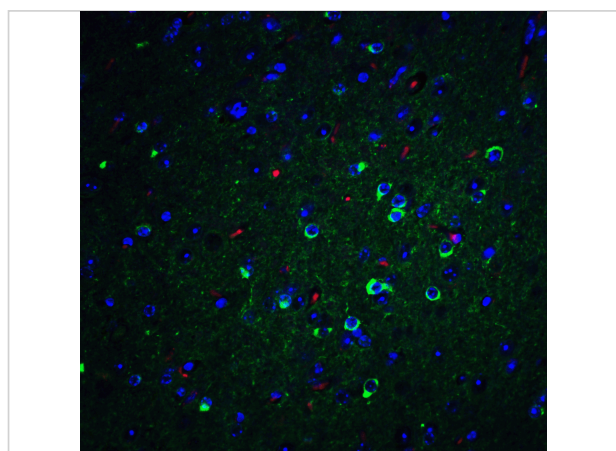
Properties

Purification	APO-E Antibody is affinity chromatography purified via peptide column.
Clonality	Polyclonal
Isotype	IgG
Physical State	Liquid
Buffer	APO-E Antibody is supplied in PBS containing 0.02% sodium azide.
Concentration	1 mg/mL
Storage Conditions	APO-E antibody can be stored at 4°C for three months and -20°C, stable for up to one year.



APO-E Antibody 1

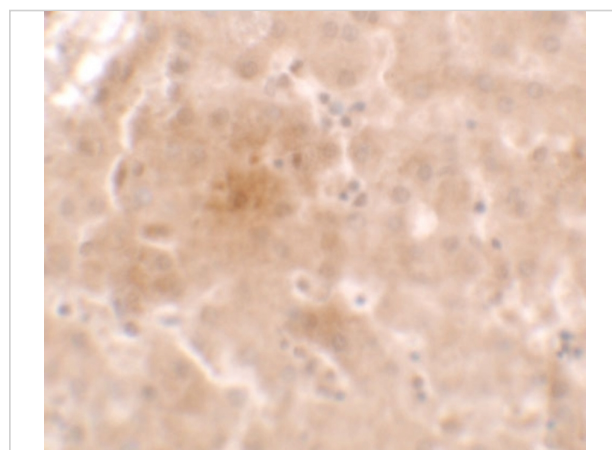
Western blot analysis of APO-E in human brain tissue lysate with APO-E antibody at (A) 0.5 and (B) 1 $\mu\text{g/mL}$.



APO-E Antibody 3

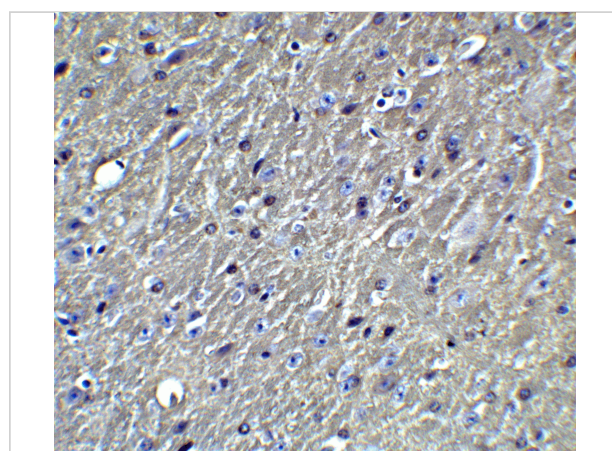
Immunofluorescence of APO E in mouse brain tissue with APO E Antibody at 20 $\mu\text{g/mL}$.

Green: APO E antibody (7333)
Red: Phylloidin staining
Blue: DAPI staining



APO-E Antibody 2

Immunohistochemistry of APO-E in human liver tissue with APO-E antibody at 2.5 $\mu\text{g/mL}$.



APO-E Antibody 4

Immunohistochemistry of APO E in mouse brain tissue with APO E Antibody at 5 $\mu\text{g/mL}$.

Disclaimer

Disclaimer

Optimal dilutions/concentrations should be determined by the end user. The information provided is a guideline for product use. This product is for research use only.

For research use only. For additional information, visit ProSci's [Terms and Conditions Page](#).