

CISD2 Antibody

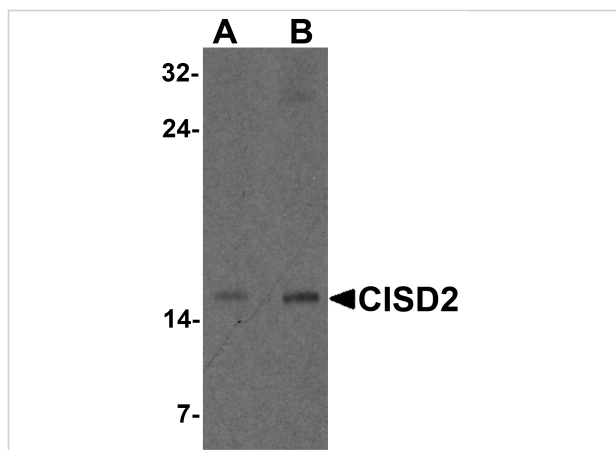
CATALOG NUMBER: 7301

Specifications

Host Species	Rabbit
Species Reactivity	Human, Mouse, Rat
Homology	Predicted species reactivity based on immunogen sequence: Bovine: (100%)
Immunogen	CISD2 antibody was raised against a 15 amino acid peptide near the center of human CISD2. The immunogen is located within amino acids 40 - 90 of CISD2.
Conjugate	Unconjugated
Tested Applications	ELISA, IF, IHC-P, WB
User Note	Optimal dilutions for each application to be determined by the researcher.
Predicted Molecular Weight	Predicted: 15 kDa Observed: 15 kDa

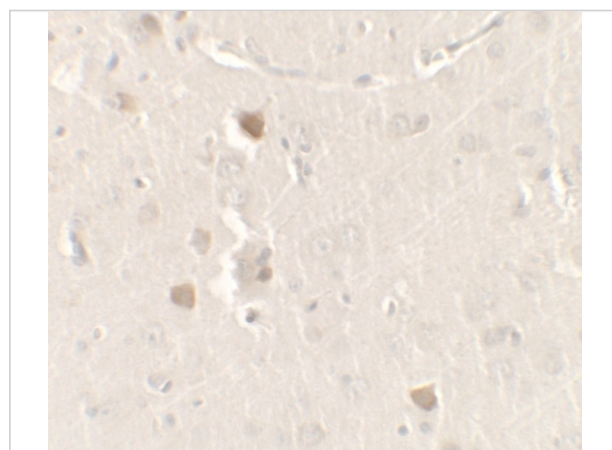
Properties

Purification	CISD2 Antibody is affinity chromatography purified via peptide column.
Clonality	Polyclonal
Isotype	IgG
Physical State	Liquid
Buffer	CISD2 Antibody is supplied in PBS containing 0.02% sodium azide.
Concentration	1 mg/mL
Storage Conditions	CISD2 antibody can be stored at 4°C for three months and -20°C, stable for up to one year.



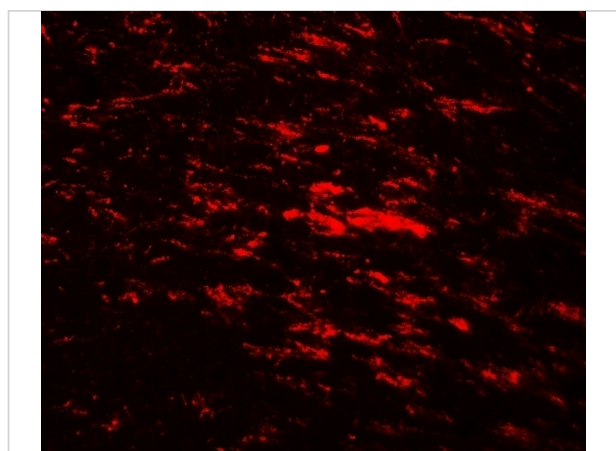
CISD2 Antibody 1

Western blot analysis of CISD2 in rat brain tissue lysate with CISD2 antibody at (A) 1 and (B) 2 µg/m



CISD2 Antibody 2

Immunohistochemistry of CISD2 in rat brain tissue with CISD2 antibody at 2.5 µg/ml.



CISD2 Antibody 3

Immunofluorescence of CISD2 in rat brain tissue with CISD2 antibody at 20 µg/ml.

Disclaimer

Disclaimer

Optimal dilutions/concentrations should be determined by the end user. The information provided is a guideline for product use. This product is for research use only.

For research use only. For additional information, visit ProSci's [Terms and Conditions Page](#).