

PRRT2 Antibody

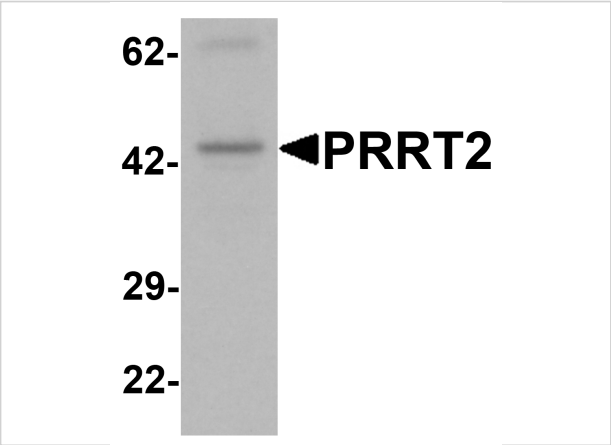
CATALOG NUMBER: 7295

Specifications

Host Species	Rabbit
Species Reactivity	Human, Mouse, Rat
Immunogen	PRRT2 antibody was raised against a 18 amino acid peptide near the center of human PRRT2 . The immunogen is located within amino acids 180 - 230 of PRRT2.
Conjugate	Unconjugated
Tested Applications	ELISA, IF, IHC-P, WB
User Note	Optimal dilutions for each application to be determined by the researcher.
Specificity	Multiple isoforms of PRRT2 are known to exist.
Predicted Molecular Weight	Predicted: 43 kDa Observed: 44 kDa

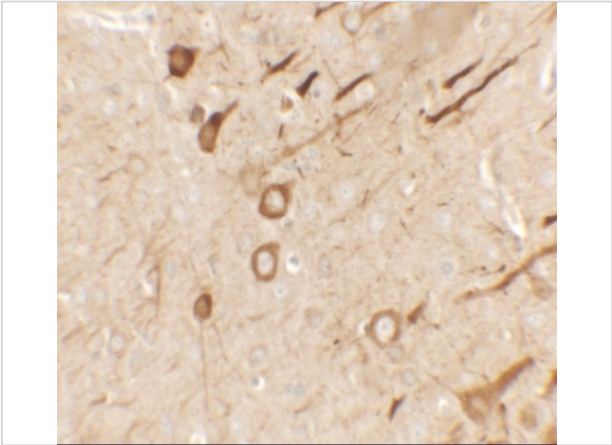
Properties

Purification	PRRT2 Antibody is affinity chromatography purified via peptide column.
Clonality	Polyclonal
Isotype	IgG
Physical State	Liquid
Buffer	PRRT2 Antibody is supplied in PBS containing 0.02% sodium azide.
Concentration	1 mg/mL
Storage Conditions	PRRT2 antibody can be stored at 4°C for three months and -20°C, stable for up to one year.



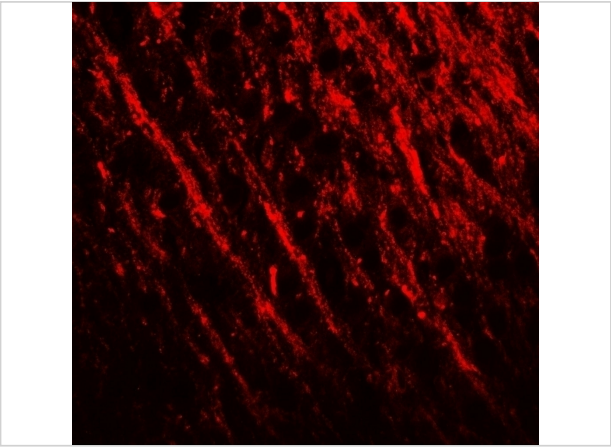
PRRT2 Antibody 1

Western blot analysis of PRRT2 in mouse brain tissue lysate with PRRT2 antibody at 1 µg/mL.



PRRT2 Antibody 2

Immunohistochemistry of PRRT2 in rat brain tissue with PRRT2 antibody at 2.5 µg/mL.



PRRT2 Antibody 3

Immunofluorescence of PRRT2 in rat brain tissue with PRRT2 antibody at 20 µg/mL.

Disclaimer

Disclaimer	Optimal dilutions/concentrations should be determined by the end user. The information provided is a guideline for product use. This product is for research use only.
-------------------	--

For research use only. For additional information, visit ProSci's [Terms and Conditions Page](#).