

TMEM135 Antibody

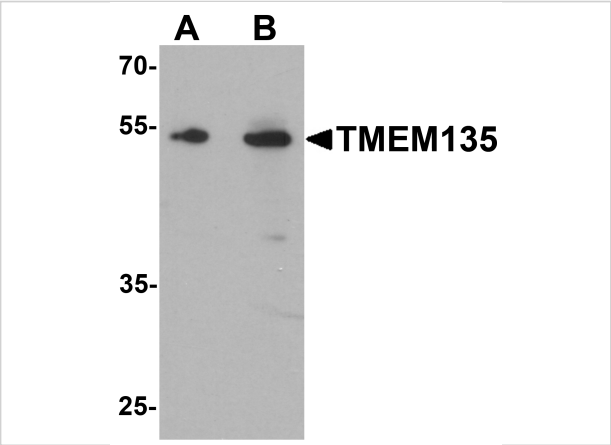
CATALOG NUMBER: 7291

Specifications

Host Species	Rabbit
Species Reactivity	Human, Mouse, Rat
Homology	Predicted species reactivity based on immunogen sequence: Bovine: (94%)
Immunogen	TMEM135 antibody was raised against a 16 amino acid peptide near the carboxy terminus of human TMEM135 . The immunogen is located within the last 50 amino acids of TMEM135.
Conjugate	Unconjugated
Tested Applications	ELISA, IF, IHC-P, WB
User Note	Optimal dilutions for each application to be determined by the researcher.
Specificity	At least two isoforms of TMEM135 are known to exist; this antibody will detect both isoforms.
Predicted Molecular Weight	Predicted: 50 kDa Observed: 53 kDa

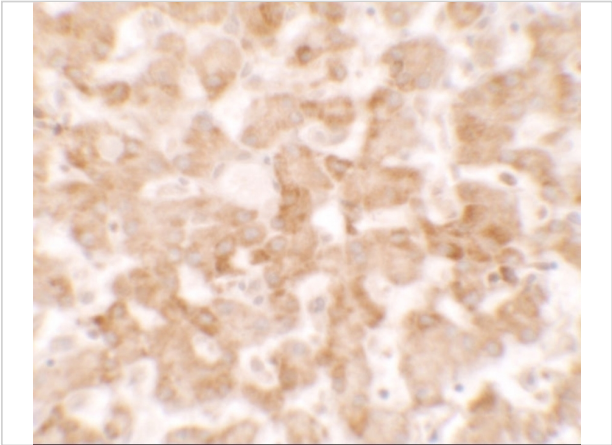
Properties

Purification	TMEM135 Antibody is affinity chromatography purified via peptide column.
Clonality	Polyclonal
Isotype	IgG
Physical State	Liquid
Buffer	TMEM135 Antibody is supplied in PBS containing 0.02% sodium azide.
Concentration	1 mg/mL
Storage Conditions	TMEM135 antibody can be stored at 4°C for three months and -20°C, stable for up to one year.



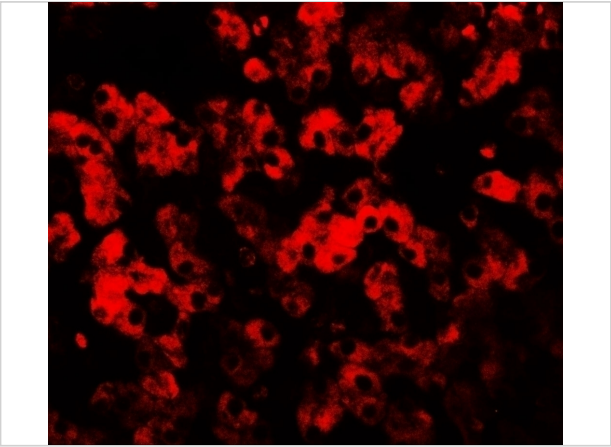
TMEM135 Antibody 1

Western blot analysis of TMEM135 in rat liver tissue lysate with TMEM135 antibody at (A) 1 and (B) 2 µg/mL.



TMEM135 Antibody 2

Immunohistochemistry of TMEM135 in human liver tissue with TMEM135 antibody at 2.5 µg/mL.



TMEM135 Antibody 3

Immunofluorescence of TMEM135 in human liver tissue with TMEM135 antibody at 20 µg/mL.

Disclaimer

Disclaimer	Optimal dilutions/concentrations should be determined by the end user. The information provided is a guideline for product use. This product is for research use only.
-------------------	--

For research use only. For additional information, visit ProSci's [Terms and Conditions Page](#).