



ProSci Incorporated
12170 Flint Place
Poway, CA 92064, USA
prosci-inc.com

P: +1 (888) 513-9525
Local: +1 (858) 513-2638
Fax: +1 (858) 513-2692

customercare@prosci-inc.com
techsupport@prosci-inc.com

KREMEN2 Antibody

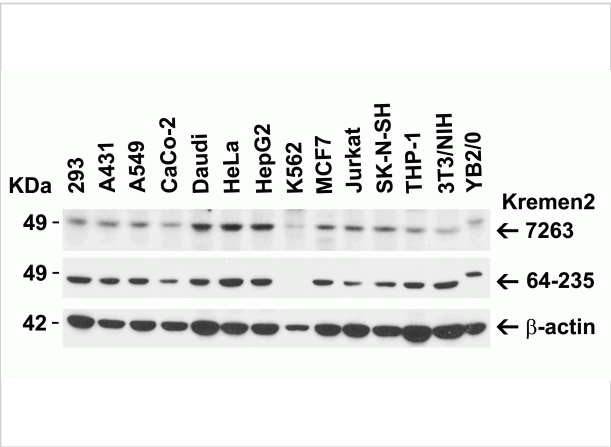
CATALOG NUMBER: 7263

Specifications

Host Species	Rabbit
Species Reactivity	Human, Mouse, Rat
Immunogen	Anti-KREMEN2 antibody (7263) was raised against a peptide corresponding to 14 amino acids near the carboxy terminus of human KREMEN2. The immunogen is located within amino acids 390-440 of KREMEN2.
Conjugate	Unconjugated
Tested Applications	ELISA, ICC, WB
User Note	Optimal dilutions for each application to be determined by the researcher.
Specificity	Multiple isoforms of KREMEN2 are known to exist. KREMEN2 antibody is predicted to not cross-react with other Kremen protein family members.
Predicted Molecular Weight	Predicted: 49kD Observed: 49kD

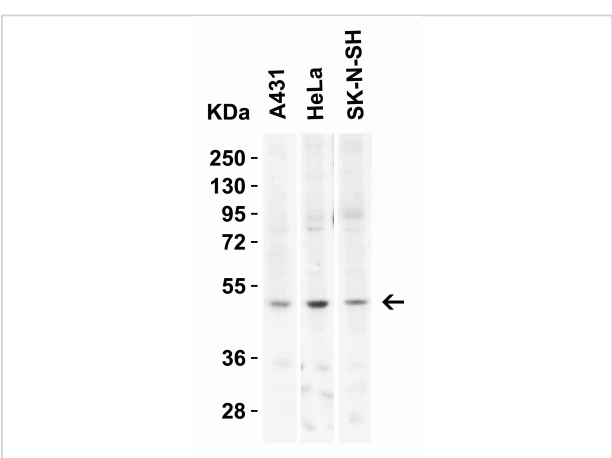
Properties

Purification	KREMEN2 Antibody is affinity chromatography purified via peptide column.
Clonality	Polyclonal
Isotype	IgG
Physical State	Liquid
Buffer	KREMEN2 Antibody is supplied in PBS containing 0.02% sodium azide.
Concentration	1 mg/mL
Storage Conditions	KREMEN2 antibody can be stored at 4°C for three months and -20°C, stable for up to one year.



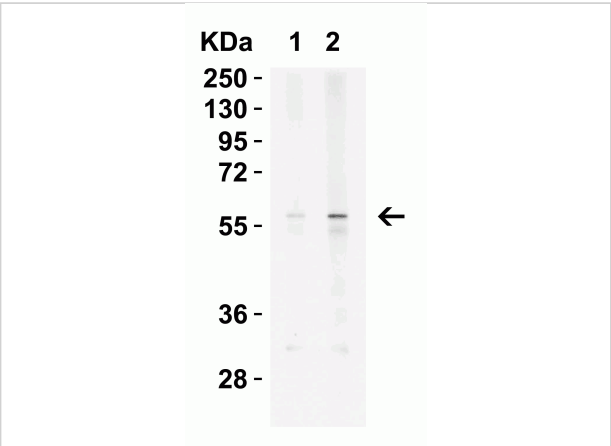
KREMEN2 Antibody 1

Figure 1 Independent Antibody Validation (IAV) via Protein Expression Profile in Human, Mouse and Rat Cell Lines
 Loading: 15 µg of lysates per lane. Antibodies: KREMEN2, 7263 (2 ...



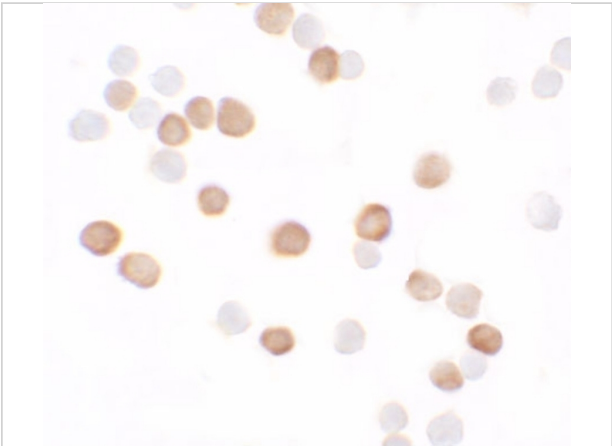
KREMEN2 Antibody 2

Figure 2 Western Blot Validation in Human Cell Lines
 Loading: 15 µg of lysates per lane. Antibodies: KREMEN2, 7263 (2 µg/mL), 1h incubation at RT in 5% NFDm/TBST. Secondary: Goat ...



KREMEN2 Antibody 3

Figure 3 Western Blot Validation in Mouse Spleen Tissue Lysate
 Loading: 15 µg of lysates per lane. Antibodies: KREMEN2 7263 (Lane 1: 1 µg/mL and Lane 2: 2 µg/mL, 1h incubation at...



KREMEN2 Antibody 4

Figure 4 Immunocytochemistry Validation of KREMEN2 in HeLa Cells
 Immunocytochemical analysis of HeLa cells using anti-KREMEN2 antibody (7263) at 5 µg/mL. Cells was fixed with fo...

Disclaimer

Disclaimer	Optimal dilutions/concentrations should be determined by the end user. The information provided is a guideline for product use. This product is for research use only.
------------	--

For research use only. For additional information, visit ProSci's [Terms and Conditions Page](#).