

FOXA2 Antibody

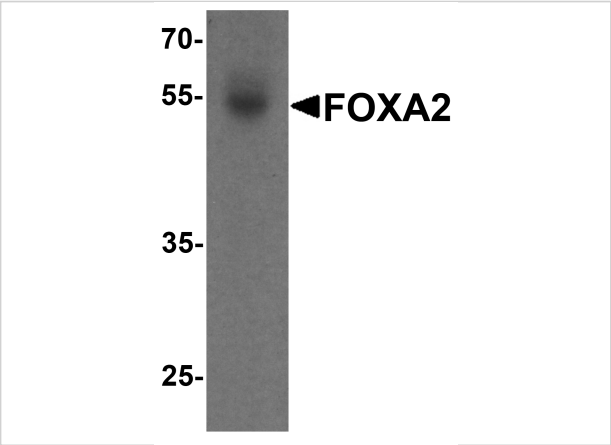
CATALOG NUMBER: 7257

Specifications

Host Species	Rabbit
Species Reactivity	Human, Mouse
Homology	Predicted species reactivity based on immunogen sequence: Rat: (94%), Mouse: (94%)
Immunogen	FOXA2 antibody was raised against a 16 amino acid peptide near the center of human FOXA2 . The immunogen is located within amino acids 280 - 330 of FOXA2.
Conjugate	Unconjugated
Tested Applications	ELISA, IF, IHC-P, WB
User Note	Optimal dilutions for each application to be determined by the researcher.
Specificity	At least two isoforms of FOXA2 are known to exist; this antibody will detect both isoforms. FOXA2 antibody is predicted to not cross-react with other members of the FOXA protein family.
Predicted Molecular Weight	Predicted: 51 kDa Observed: 54 kDa

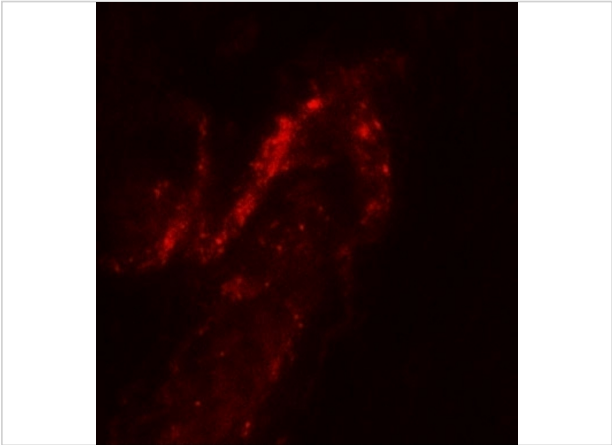
Properties

Purification	FOXA2 Antibody is affinity chromatography purified via peptide column.
Clonality	Polyclonal
Isotype	IgG
Physical State	Liquid
Buffer	FOXA2 Antibody is supplied in PBS containing 0.02% sodium azide.
Concentration	1 mg/mL
Storage Conditions	FOXA2 antibody can be stored at 4°C for three months and -20°C, stable for up to one year.



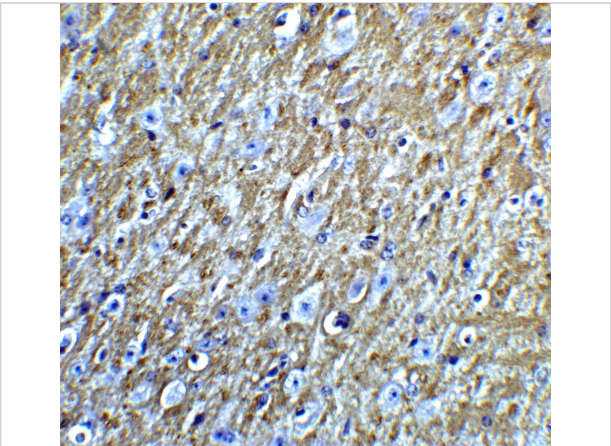
FOXA2 Antibody 1

Western blot analysis of FOXA2 in human bladder tissue lysate with FOXA2 antibody at 1 µg/mL.



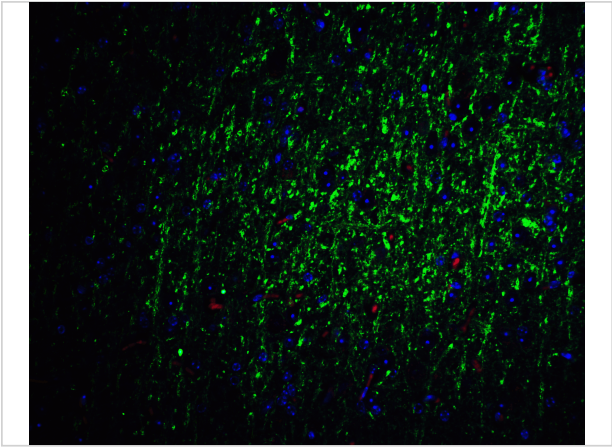
FOXA2 Antibody 2

Immunofluorescence of FOXA2 in human bladder tissue with FOXA2 antibody at 20 µg/mL.



FOXA2 Antibody 3

Immunohistochemistry of FOXA2 in mouse brain tissue with FOXA2 Antibody at 5 µg/mL.



FOXA2 Antibody 4

Immunofluorescence of FOXA2 in mouse brain tissue with FOXA2 Antibody at 20 µg/mL.

Green: FOXA2 antibody (7257)
Red: Phylloidin staining
Blue: DAPI staining

Disclaimer

Disclaimer	Optimal dilutions/concentrations should be determined by the end user. The information provided is a guideline for product use. This product is for research use only.
------------	--

For research use only. For additional information, visit ProSci's [Terms and Conditions Page](#).