

## PIBF1 Antibody

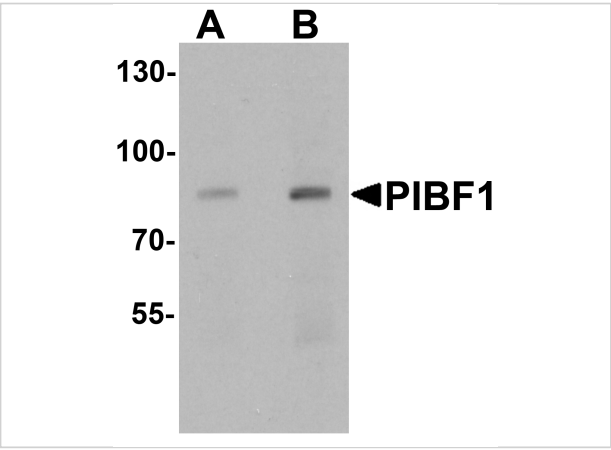
CATALOG NUMBER: 7237

### Specifications

Host Species	Rabbit
Species Reactivity	Human, Mouse, Rat
Immunogen	Rabbit polyclonal PIBF1 antibody was raised against a 15 amino acid peptide near the carboxy terminus of human PIBF1. The immunogen is located within amino acids 610 - 660 of PIBF1.
Conjugate	Unconjugated
Tested Applications	ELISA, IF, IHC-P, WB
User Note	Optimal dilutions for each application to be determined by the researcher.
Specificity	Multiple isoforms of PIBF1 exists as a result of alternative splicing event.
Predicted Molecular Weight	83 kDa

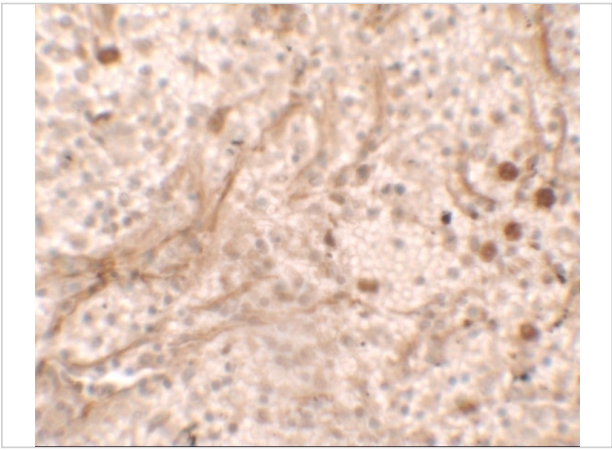
### Properties

Purification	PIBF1 Antibody is affinity chromatography purified via peptide column.
Clonality	Polyclonal
Isotype	IgG
Physical State	Liquid
Buffer	PIBF1 Antibody is supplied in PBS containing 0.02% sodium azide.
Concentration	1 mg/mL
Storage Conditions	PIBF1 antibody can be stored at 4°C for three months and -20°C, stable for up to one year.



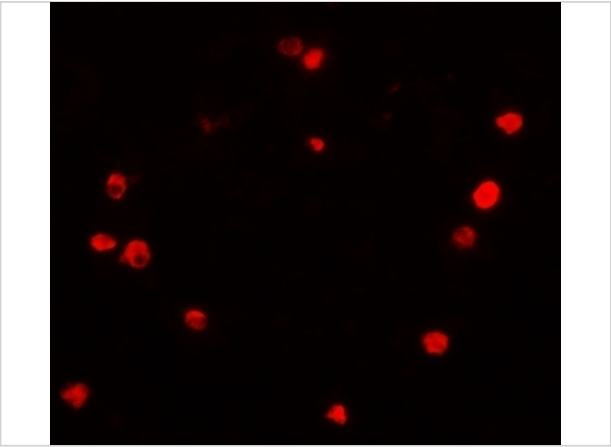
**PIBF1 Antibody 1**

Western blot analysis of PIBF1 in human placenta tissue lysate with PIBF1 antibody at (A) 1 and (B) 2  $\mu$ g/mL



**PIBF1 Antibody 2**

Immunohistochemistry of PBIF in human spleen tissue with PBIF antibody at 5  $\mu$ g/mL.



**PIBF1 Antibody 3**

Immunofluorescence of PBIF in human spleen tissue with PBIF antibody at 20  $\mu$ g/mL.

**Disclaimer**

<b>Disclaimer</b>	Optimal dilutions/concentrations should be determined by the end user. The information provided is a guideline for product use. This product is for research use only.
-------------------	--

For research use only. For additional information, visit ProSci's [Terms and Conditions Page](#).