

## IL-15RA Antibody

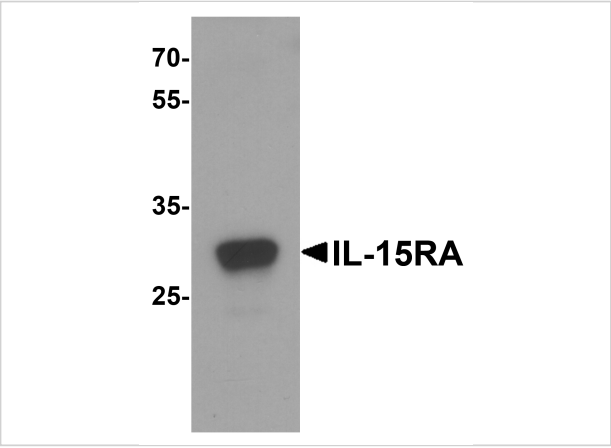
CATALOG NUMBER: 7233

### Specifications

|                            |  |
|----------------------------|--|
| Host Species               | Rabbit   |
| Species Reactivity         | Human, Mouse, Rat  |
| Immunogen                  | Rabbit polyclonal IL-15RA antibody was raised against a 16 amino acid peptide near the center of human IL-15RA.<br>The immunogen is located within amino acids 40 - 90 of IL-15RA. |
| Conjugate                  | Unconjugated   |
| Tested Applications        | ELISA, WB  |
| User Note                  | Optimal dilutions for each application to be determined by the researcher.   |
| Specificity                | Multiple isoforms of IL-15RA are known to exist.   |
| Predicted Molecular Weight | Predicted: 26, 30, 38 kDa<br>Observed: 30 kDa  |

### Properties

|                    |  |
|--------------------|--|
| Purification       | IL-15RA Antibody is affinity chromatography purified via peptide column.                     |
| Clonality          | Polyclonal   |
| Isotype            | IgG  |
| Physical State     | Liquid   |
| Buffer             | IL-15RA Antibody is supplied in PBS containing 0.02% sodium azide.                           |
| Concentration      | 1 mg/mL  |
| Storage Conditions | IL-15RA antibody can be stored at 4°C for three months and -20°C, stable for up to one year. |



IL-15RA Antibody 1

Western blot analysis of IL-15RA in rat small intestine tissue lysate with IL-15RA antibody at 1 µg/mL.

Disclaimer

|            |  |
|------------|--|
| Disclaimer | Optimal dilutions/concentrations should be determined by the end user. The information provided is a guideline for product use. This product is for research use only. |
|------------|--|

For research use only. For additional information, visit ProSci's [Terms and Conditions Page](#).