

GRIP1 Antibody

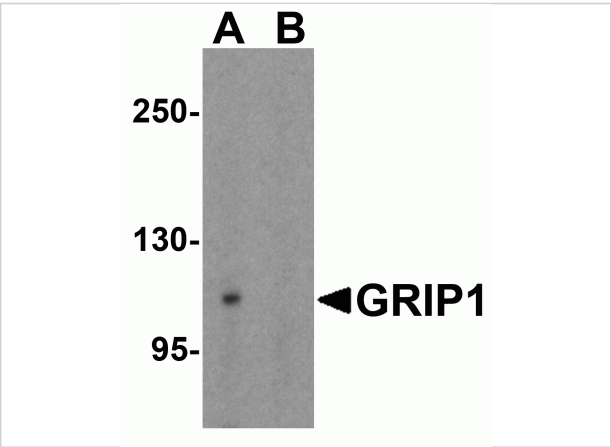
CATALOG NUMBER: 7229

Specifications

Host Species	Rabbit
Species Reactivity	Human, Mouse, Rat
Immunogen	Rabbit polyclonal GRIP1 antibody was raised against a 17 amino acid peptide near the carboxy terminus of human GRIP1. The immunogen is located within the last 50 amino acids of GRIP1.
Conjugate	Unconjugated
Tested Applications	ELISA, IF, IHC-P, WB
User Note	Optimal dilutions for each application to be determined by the researcher.
Predicted Molecular Weight	Predicted: 118 kDa Observed: 115 kDa

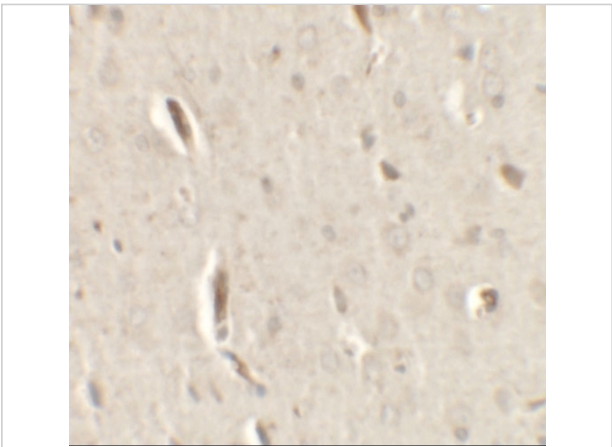
Properties

Purification	GRIP1 Antibody is affinity chromatography purified via peptide column.
Clonality	Polyclonal
Isotype	IgG
Physical State	Liquid
Buffer	GRIP1 Antibody is supplied in PBS containing 0.02% sodium azide.
Concentration	1 mg/mL
Storage Conditions	GRIP1 antibody can be stored at 4°C for three months and -20°C, stable for up to one year.



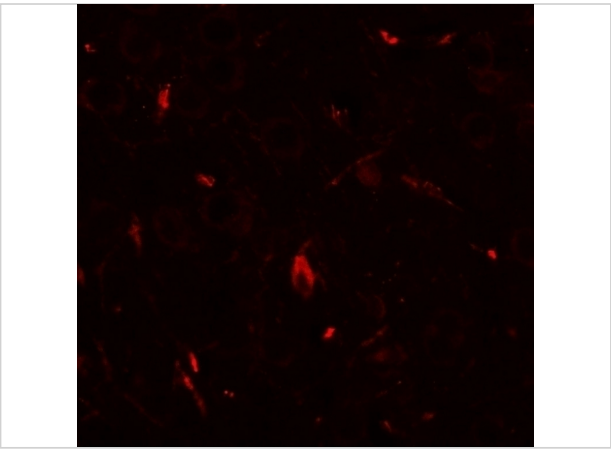
GRIP1 Antibody 1

Western blot analysis of GRIP1 in 293 cell lysate with GRIP1 antibody at 1 µg/mL in (A) the absence and (B) the presence of blocking peptide.



GRIP1 Antibody 2

Immunohistochemistry of GRIP1 in rat brain tissue with GRIP1 antibody at 2.5 µg/mL.



GRIP1 Antibody 3

Immunofluorescence of GRIP1 in rat brain tissue with GRIP1 antibody at 20 µg/mL.

Disclaimer

Disclaimer	Optimal dilutions/concentrations should be determined by the end user. The information provided is a guideline for product use. This product is for research use only.
-------------------	--

For research use only. For additional information, visit ProSci's [Terms and Conditions Page](#).