

CCL4 Antibody

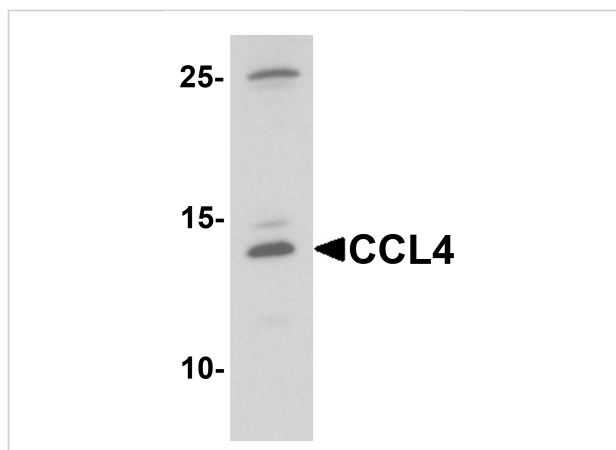
CATALOG NUMBER: 7227

Specifications

Host Species	Rabbit
Species Reactivity	Human, Mouse, Rat
Homology	Predicted species reactivity based on immunogen sequence: Rabbit: (80%), Pig: (80%), Bovine: (85%)
Immunogen	Rabbit polyclonal CCL4 antibody was raised against a 15 amino acid peptide near the center of human CCL4. The immunogen is located within the first 50 amino acids of CCL4.
Conjugate	Unconjugated
Tested Applications	ELISA, IF, IHC-P, WB
User Note	Optimal dilutions for each application to be determined by the researcher.
Predicted Molecular Weight	Predicted: 10 kDa

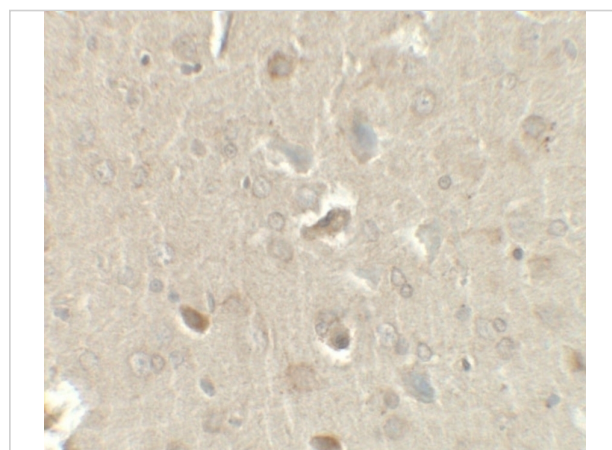
Properties

Purification	CCL4 Antibody is affinity chromatography purified via peptide column.
Clonality	Polyclonal
Isotype	IgG
Physical State	Liquid
Buffer	CCL4 Antibody is supplied in PBS containing 0.02% sodium azide.
Concentration	1 mg/mL
Storage Conditions	CCL4 antibody can be stored at 4°C for three months and -20°C, stable for up to one year.



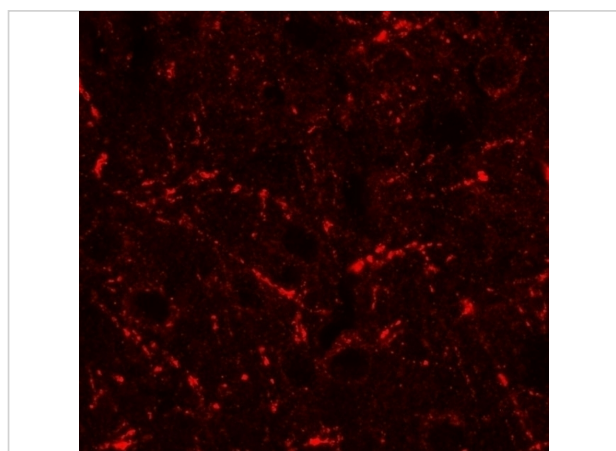
CCL4 Antibody 1

Western blot analysis of CCL4 in rat brain tissue lysate with CCL4 antibody at 1 µg/mL.



CCL4 Antibody 2

Immunohistochemistry of CCL4 in rat brain tissue with CCL4 antibody at 2.5 µg/mL.



CCL4 Antibody 3

Immunofluorescence of CCL4 in rat brain tissue with CCL4 antibody at 20 µg/mL.

Disclaimer

Disclaimer

Optimal dilutions/concentrations should be determined by the end user. The information provided is a guideline for product use. This product is for research use only.

For research use only. For additional information, visit ProSci's [Terms and Conditions Page](#).