



ProSci Incorporated
12170 Flint Place
Poway, CA 92064, USA
prosci-inc.com

P: +1 (888) 513-9525
Local: +1 (858) 513-2638
Fax: +1 (858) 513-2692

customercare@prosci-inc.com
techsupport@prosci-inc.com

NELF Antibody

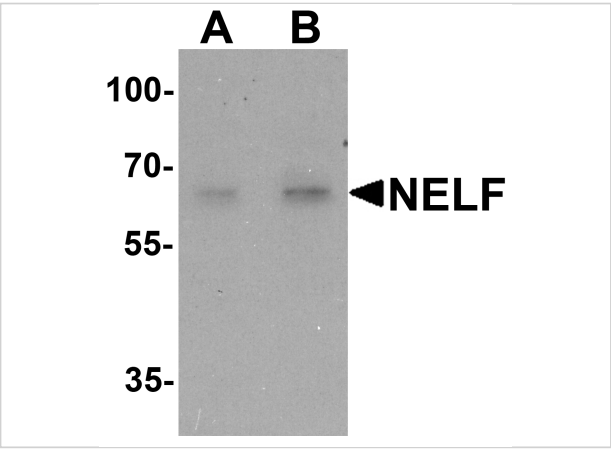
CATALOG NUMBER: 7225

Specifications

Host Species	Rabbit
Species Reactivity	Human, Mouse, Rat
Immunogen	Rabbit polyclonal NELF antibody was raised against a 17 amino acid peptide near the center of human NELF. The immunogen is located within amino acids 230 - 280 of NELF.
Conjugate	Unconjugated
Tested Applications	ELISA, IF, IHC-P, WB
User Note	Optimal dilutions for each application to be determined by the researcher.
Predicted Molecular Weight	Predicted: 58 kDa

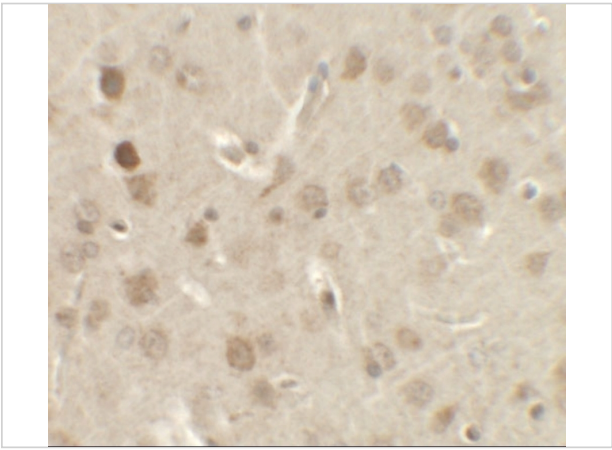
Properties

Purification	NELF Antibody is affinity chromatography purified via peptide column.
Clonality	Polyclonal
Isotype	IgG
Physical State	Liquid
Buffer	NELF Antibody is supplied in PBS containing 0.02% sodium azide.
Concentration	1 mg/mL
Storage Conditions	NELF antibody can be stored at 4°C for three months and -20°C, stable for up to one year.



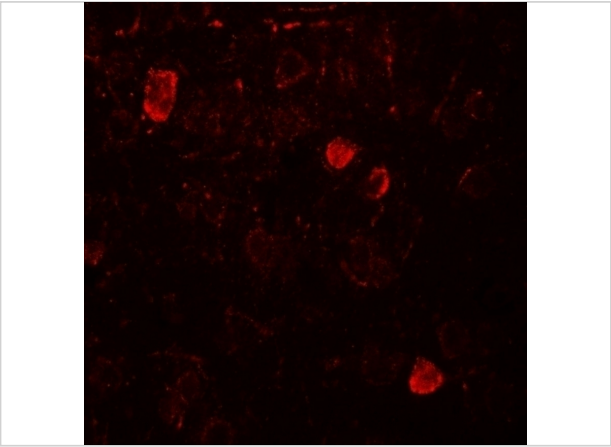
NELF Antibody 1

Western blot analysis of NELF in HeLa cell lysate with NELF antibody at (A) 1 and (B) 2 $\mu\text{g/mL}$.



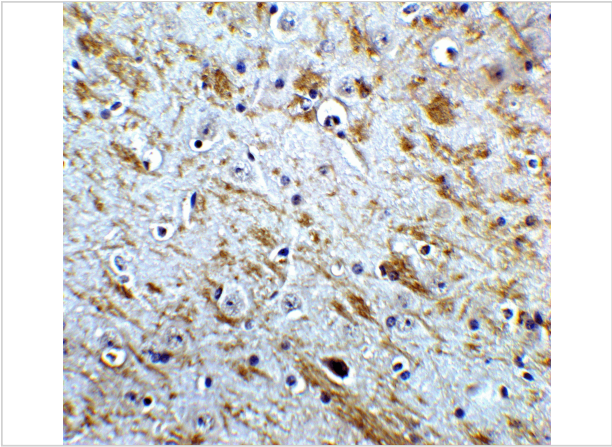
NELF Antibody 2

Immunohistochemistry of NELF in rat brain tissue with NELF antibody at 2.5 $\mu\text{g/mL}$.



NELF Antibody 3

Immunofluorescence of NELF in rat brain tissue with NELF antibody at 20 $\mu\text{g/mL}$.



NELF Antibody 4

Immunohistochemistry of NELF in mouse brain tissue with NELF Antibody at 5 $\mu\text{g/mL}$.

Disclaimer

Disclaimer	Optimal dilutions/concentrations should be determined by the end user. The information provided is a guideline for product use. This product is for research use only.
-------------------	--

For research use only. For additional information, visit ProSci's [Terms and Conditions Page](#).