

STAT3 Antibody

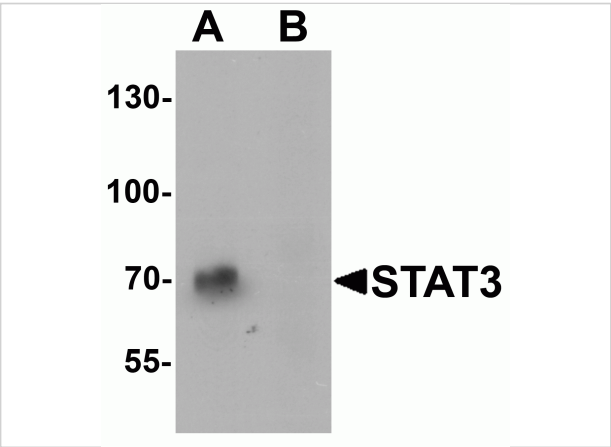
CATALOG NUMBER: 7197

Specifications

Host Species	Rabbit
Species Reactivity	Human, Mouse, Rat
Homology	Predicted species reactivity based on immunogen sequence: Bovine: (100%), Pig: (100%), Chicken: (100%)
Immunogen	Rabbit polyclonal STAT3 antibody was raised against a 19amino acid peptide near the amino terminus of human STAT3. The immunogen is located within amino acids 170 - 220 of STAT3.
Conjugate	Unconjugated
Tested Applications	ELISA, IF, IHC-P, WB
User Note	Optimal dilutions for each application to be determined by the researcher.
Predicted Molecular Weight	Predicted: 85 kDa

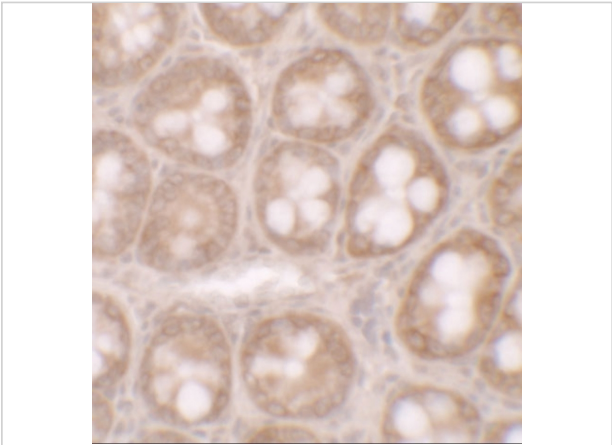
Properties

Purification	STAT3 Antibody is affinity chromatography purified via peptide column.
Clonality	Polyclonal
Isotype	IgG
Physical State	Liquid
Buffer	STAT3 Antibody is supplied in PBS containing 0.02% sodium azide.
Concentration	1 mg/mL
Storage Conditions	STAT3 antibody can be stored at 4°C for three months and -20°C, stable for up to one year.



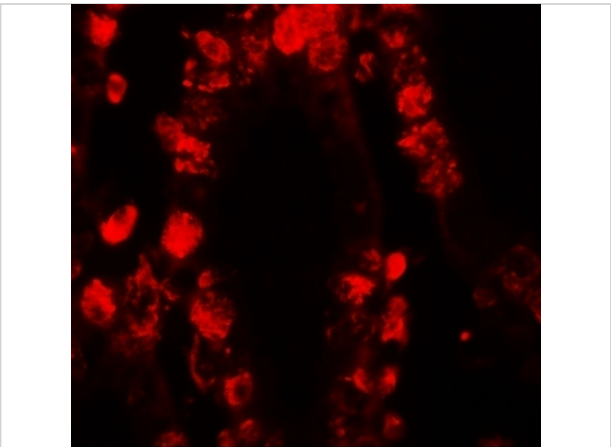
STAT3 Antibody 1

Western blot analysis of STAT3 in human small intestine tissue lysate with STAT3 antibody at 1 µg/mL in (A) the absence and (B) the presence of blocking peptide.



STAT3 Antibody 2

Immunohistochemistry of STAT3 in human small intestine tissue with STAT3 antibody at 5 µg/mL.



STAT3 Antibody 3

Immunofluorescence of STAT3 in human small intestine tissue with STAT3 antibody at 20 µg/mL.

Disclaimer

Disclaimer	Optimal dilutions/concentrations should be determined by the end user. The information provided is a guideline for product use. This product is for research use only.
------------	--

For research use only. For additional information, visit ProSci's [Terms and Conditions Page](#).