

PTGDR2 Antibody

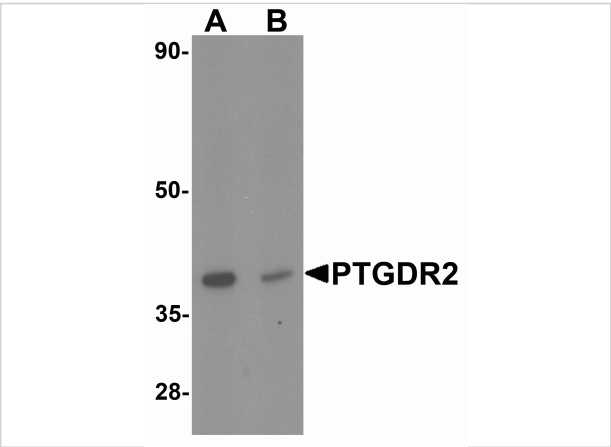
CATALOG NUMBER: 7191

Specifications

| | |
|----------------------------|---|
| Host Species | Rabbit |
| Species Reactivity | Human, Mouse |
| Immunogen | Rabbit polyclonal PTGDR2 antibody was raised against a 19 amino acid peptide near the center of human PTGDR2. The immunogen is located within amino acids 320 - 370 of PTGDR2. |
| Conjugate | Unconjugated |
| Tested Applications | ELISA, IF, WB |
| User Note | Optimal dilutions for each application to be determined by the researcher. |
| Predicted Molecular Weight | Predicted: 43 kDa |

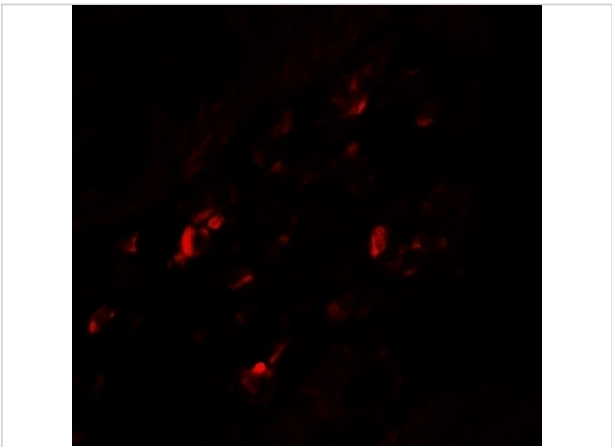
Properties

| | |
|--------------------|---|
| Purification | PTGDR2 Antibody is affinity chromatography purified via peptide column. |
| Clonality | Polyclonal |
| Isotype | IgG |
| Physical State | Liquid |
| Buffer | PTGDR2 Antibody is supplied in PBS containing 0.02% sodium azide. |
| Concentration | 1 mg/mL |
| Storage Conditions | PTGDR2 antibody can be stored at 4°C for three months and -20°C, stable for up to one year. |



PTGDR2 Antibody 1

Western blot analysis of PTGDR2 in small intestine tissue lysate with PTGDR2 antibody at 1 µg/mL in (A) the absence and (B) the presence of blocking peptide.



PTGDR2 Antibody 2

Immunofluorescence of PTGDR2 in human small intestine tissue with PTGDR2 antibody at 20 µg/ml.

Disclaimer

| | |
|------------|--|
| Disclaimer | Optimal dilutions/concentrations should be determined by the end user. The information provided is a guideline for product use. This product is for research use only. |
|------------|--|

For research use only. For additional information, visit ProSci's [Terms and Conditions Page](#).