

## TRPV1 Antibody

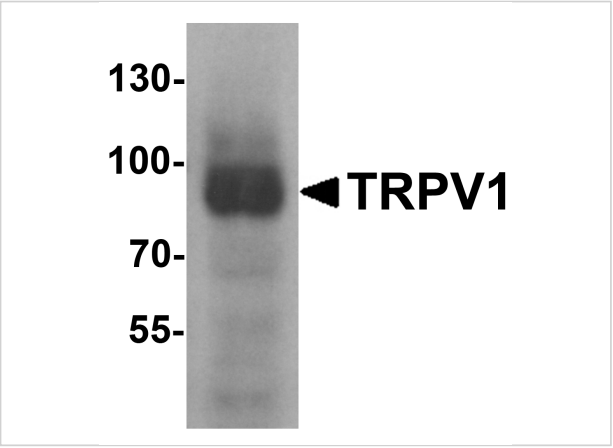
CATALOG NUMBER: 7179

### Specifications

Host Species	Rabbit
Species Reactivity	Human
Homology	Predicted species reactivity based on immunogen sequence: Guinea pig: (81%), Mouse: (75%)
Immunogen	Rabbit polyclonal TRPV1 antibody was raised against a 16 amino acid peptide near the carboxy terminus of human TRPV1. The immunogen is located within the last 50 amino acids of TRPV1.
Conjugate	Unconjugated
Tested Applications	ELISA, WB
User Note	Optimal dilutions for each application to be determined by the researcher.
Predicted Molecular Weight	Predicted: 92 kDa

### Properties

Purification	TRPV1 Antibody is affinity chromatography purified via peptide column.
Clonality	Polyclonal
Isotype	IgG
Physical State	Liquid
Buffer	TRPV1 Antibody is supplied in PBS containing 0.02% sodium azide.
Concentration	1 mg/mL
Storage Conditions	TRPV1 antibody can be stored at 4°C for three months and -20°C, stable for up to one year.



TRPV1 Antibody 1

Western blot analysis of TRPV1 in K562 cell lysate with TRPV1 antibody at 1 µg/mL.

Disclaimer

Disclaimer	Optimal dilutions/concentrations should be determined by the end user. The information provided is a guideline for product use. This product is for research use only.
------------	--

For research use only. For additional information, visit ProSci's [Terms and Conditions Page](#).