

SIDT2 Antibody

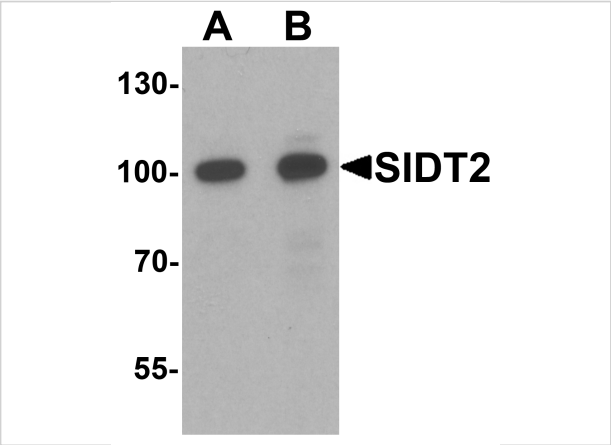
CATALOG NUMBER: 7159

Specifications

Host Species	Rabbit
Species Reactivity	Human, Mouse, Rat
Immunogen	Rabbit polyclonal SIDT2 antibody was raised against an 18 amino acid peptide near the amino terminus of human SIDT2. The immunogen is located within the first 50 amino acids of SIDT2.
Conjugate	Unconjugated
Tested Applications	ELISA, WB
User Note	Optimal dilutions for each application to be determined by the researcher.
Specificity	Multiple isoforms of SIDT2 are known to exist; this antibody is predicted to not cross-react with other members of the SID1 transmembrane family.
Predicted Molecular Weight	Predicted: 92 kDa

Properties

Purification	SIDT2 Antibody is affinity chromatography purified via peptide column.
Clonality	Polyclonal
Isotype	IgG
Physical State	Liquid
Buffer	SIDT2 Antibody is supplied in PBS containing 0.02% sodium azide.
Concentration	1 mg/mL
Storage Conditions	SIDT2 antibody can be stored at 4°C for three months and -20°C, stable for up to one year.



SIDT2 Antibody 1

Western blot analysis of SIDT2 in mouse brain tissue lysate with SIDT2 antibody at (A) 0.5 and (B) 1 μ g/mL.

Disclaimer

Disclaimer	Optimal dilutions/concentrations should be determined by the end user. The information provided is a guideline for product use. This product is for research use only.
------------	--

For research use only. For additional information, visit ProSci's [Terms and Conditions Page](#).