

## CRB2 Antibody

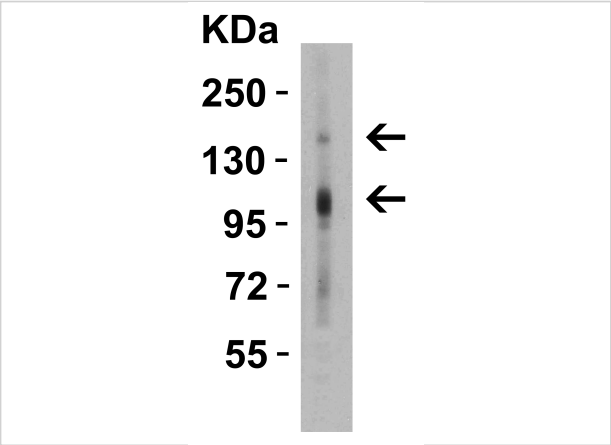
CATALOG NUMBER: 7155

### Specifications

Host Species	Rabbit
Species Reactivity	Human, Mouse, Rat
Immunogen	Rabbit polyclonal CRB2 antibody was raised against a 17 amino acid peptide near the center of human CRB2. The immunogen is located within amino acids 460 - 510 of CRB2.
Conjugate	Unconjugated
Tested Applications	ELISA, WB
User Note	Optimal dilutions for each application to be determined by the researcher.
Specificity	At least three isoforms of CRB2 are known to exist; this antibody will detect all three. CRB2 antibody is predicted to not cross-react with other members of the CRB family.
Predicted Molecular Weight	Predicted: 105, 129, and 141 kDa Observed: 103, 128 kDa

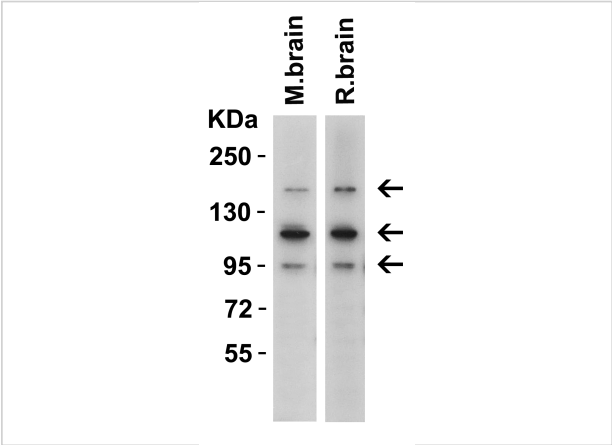
### Properties

Purification	CRB2 Antibody is affinity chromatography purified via peptide column.
Clonality	Polyclonal
Isotype	IgG
Physical State	Liquid
Buffer	CRB2 Antibody is supplied in PBS containing 0.02% sodium azide.
Concentration	1 mg/mL
Storage Conditions	CRB2 antibody can be stored at 4°C for three months and -20°C, stable for up to one year.



CRB2 Antibody 1

**WB Validation in Human Kidney**  
Loading: 15 µg of tissue lysate Antibodies: CRB2 7155, 1 µg/mL , 1 h incubation at RT in 5% NFDM/TBST.Secondary: Goat Anti-Rabbit IgG HRP conjug...



CRB2 Antibody 2

**WB Validation in Mouse and Rat Brain**  
Loading: 15 µg of tissue lysate Antibodies: CRB2 7155, 1 µg/mL , 1 h incubation at RT in 5% NFDM/TBST.Secondary: Goat Anti-Rabbit IgG HR...

Disclaimer

Disclaimer	Optimal dilutions/concentrations should be determined by the end user. The information provided is a guideline for product use. This product is for research use only.
------------	--

For research use only. For additional information, visit ProSci's [Terms and Conditions Page](#).