

MECR Antibody

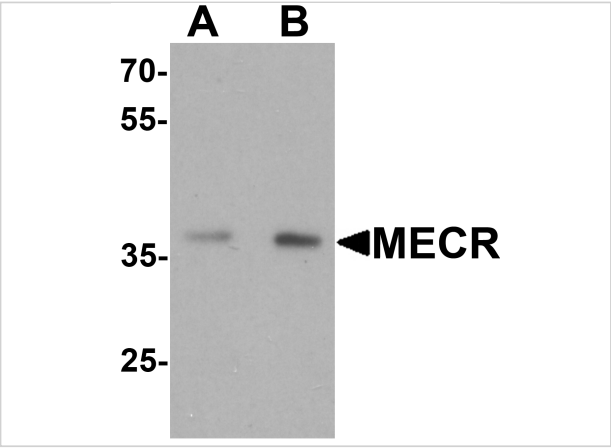
CATALOG NUMBER: 7151

Specifications

Host Species	Rabbit
Species Reactivity	Human, Mouse, Rat
Homology	Predicted species reactivity based on immunogen sequence: Bovine: (100%)
Immunogen	Rabbit polyclonal MECR antibody was raised against a 15 amino acid peptide near the carboxy terminus of human MECR. The immunogen is located within amino acids 300 - 350 of MECR.
Conjugate	Unconjugated
Tested Applications	ELISA, WB
User Note	Optimal dilutions for each application to be determined by the researcher.
Specificity	At least two isoforms of MECR are known to exist; this antibody will detect both isoforms.
Predicted Molecular Weight	Predicted: 41 kDa

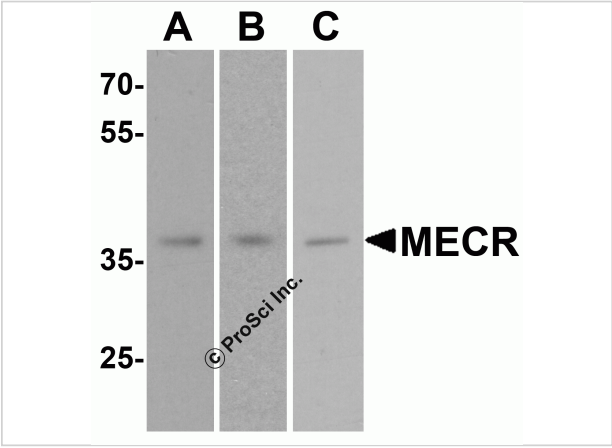
Properties

Purification	MECR Antibody is affinity chromatography purified via peptide column.
Clonality	Polyclonal
Isotype	IgG
Physical State	Liquid
Buffer	MECR Antibody is supplied in PBS containing 0.02% sodium azide.
Concentration	1 mg/mL
Storage Conditions	MECR antibody can be stored at 4°C for three months and -20°C, stable for up to one year.



MECR Antibody 1

Western blot analysis of MECR in human brain tissue lysate with MECR antibody at (A) 1 and (B) 2 µg/mL.



MECR Antibody 2

Western blot analysis of MECR in (A) human brain tissue, (B) mouse brain tissue, and (C) rat brain tissue lysate with MECR antibody at 1 µg/mL.

Disclaimer

Disclaimer	Optimal dilutions/concentrations should be determined by the end user. The information provided is a guideline for product use. This product is for research use only.
------------	--

For research use only. For additional information, visit ProSci's [Terms and Conditions Page](#).