

HEPACAM2 Antibody

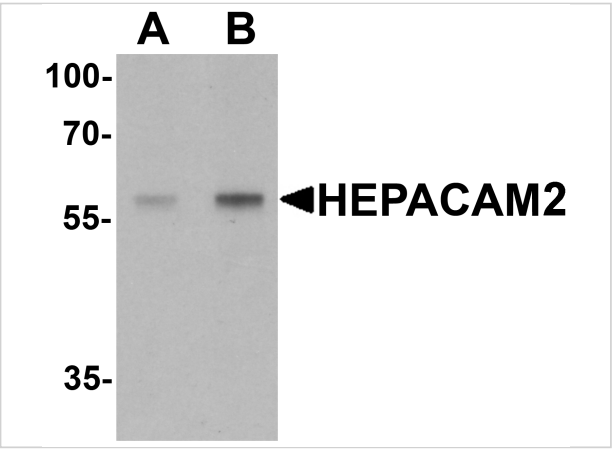
CATALOG NUMBER: 7111

Specifications

Host Species	Rabbit
Species Reactivity	Human, Mouse, Rat
Homology	Predicted species reactivity based on immunogen sequence: Bovine: (95%)
Immunogen	Rabbit polyclonal HEPACAM2 antibody was raised against a 19 amino acid peptide near the carboxy terminus of human HEPACAM2. The immunogen is located within amino acids 370 - 420 of HEPACAM2.
Conjugate	Unconjugated
Tested Applications	ELISA, WB
User Note	Optimal dilutions for each application to be determined by the researcher.
Specificity	HEPACAM2 antibody is human, mouse and rat reactive. At least two isoforms of HEPACAM2 are known to exist; this antibody will detect both isoforms. HEPACAM2 antibody is predicted to not cross-react with HEPACAM.
Predicted Molecular Weight	51 kDa

Properties

Purification	HEPACAM2 Antibody is affinity chromatography purified via peptide column.
Clonality	Polyclonal
Isotype	IgG
Physical State	Liquid
Buffer	HEPACAM2 Antibody is supplied in PBS containing 0.02% sodium azide.
Concentration	1 mg/mL
Storage Conditions	HEPACAM2 antibody can be stored at 4°C for three months and -20°C, stable for up to one year. As with all antibodies care should be taken to avoid repeated freeze thaw cycles. Antibodies should not be exposed to prolonged high temperatures.



HEPACAM2 Antibody 1

Western blot analysis of HEPACAM2 in mouse brain tissue lysate with HEPACAM2 antibody at (A) 0.5 µg/mL and (B) 1 µg/mL.

Disclaimer

Disclaimer	Optimal dilutions/concentrations should be determined by the end user. The information provided is a guideline for product use. This product is for research use only.
------------	--

For research use only. For additional information, visit ProSci's [Terms and Conditions Page](#).