

## LMX1A Antibody

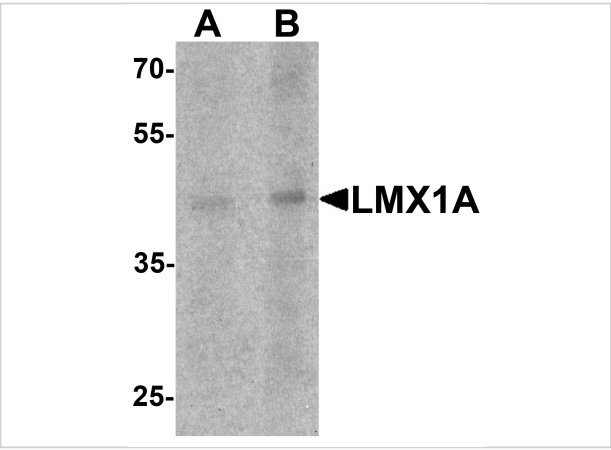
CATALOG NUMBER: 7087

### Specifications

Host Species	Rabbit
Species Reactivity	Human, Mouse, Rat
Homology	Predicted species reactivity based on immunogen sequence: Chicken: (92%)
Immunogen	Rabbit polyclonal LMX1A antibody was raised against a 16 amino acid peptide near the carboxy terminus of human LMX1A. The immunogen is located within amino acids 300 - 350 of LMX1A.
Conjugate	Unconjugated
Tested Applications	ELISA, IF, IHC-P, WB
User Note	Optimal dilutions for each application to be determined by the researcher.
Specificity	At least two isoforms are known to exist. This antibody is predicted to not cross-react with LMX1B.
Predicted Molecular Weight	42 kDa

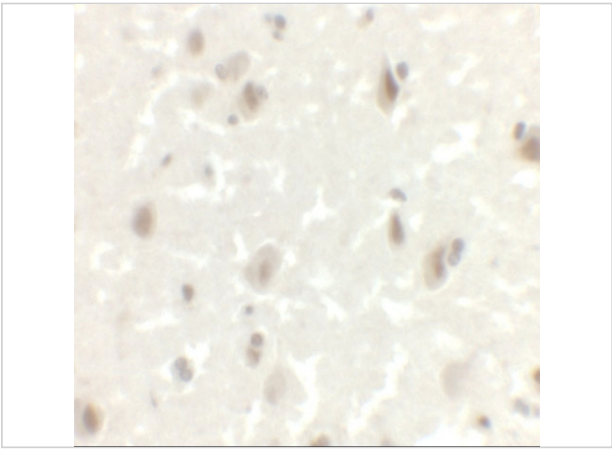
### Properties

Purification	LMX1A Antibody is affinity chromatography purified via peptide column.
Clonality	Polyclonal
Isotype	IgG
Physical State	Liquid
Buffer	LMX1A Antibody is supplied in PBS containing 0.02% sodium azide.
Concentration	1 mg/mL
Storage Conditions	LMX1A antibody can be stored at 4°C for three months and -20°C, stable for up to one year. As with all antibodies care should be taken to avoid repeated freeze thaw cycles. Antibodies should not be exposed to prolonged high temperatures.



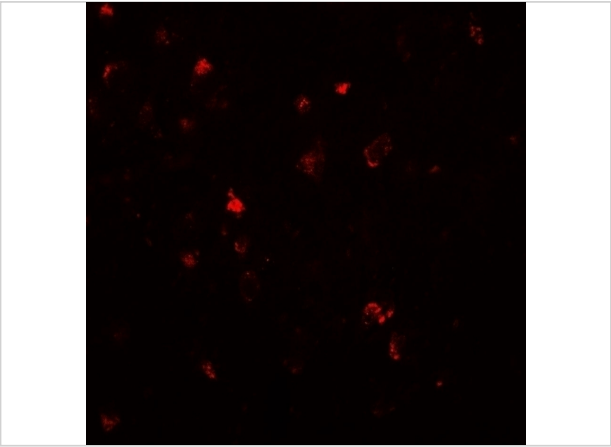
LMX1A Antibody 1

Western blot analysis of LMX1A in rat brain tissue lysate with LMX1A antibody at (A) 1 and (B) 2 µg/mL.



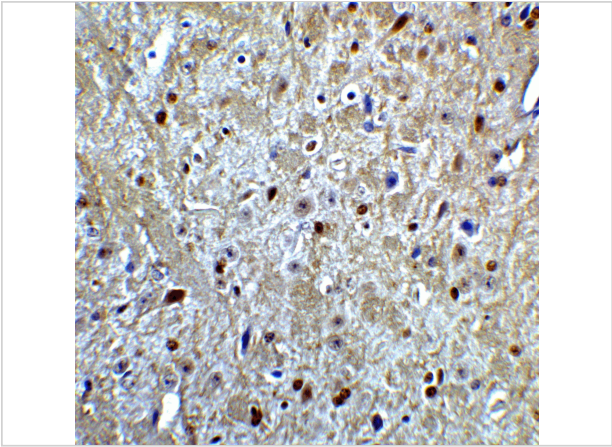
LMX1A Antibody 2

Immunohistochemistry of LMX1A in human brain tissue with LMX1A antibody at 2.5 µg/mL.



LMX1A Antibody 3

Immunofluorescence of LMX1A in human brain tissue with LMX1A antibody at 20 µg/mL.



LMX1A Antibody 4

Immunohistochemistry of LMX1A in mouse brain tissue with LMX1A Antibody at 5 µg/mL.

Disclaimer

Disclaimer	Optimal dilutions/concentrations should be determined by the end user. The information provided is a guideline for product use. This product is for research use only.
------------	--

For research use only. For additional information, visit ProSci's [Terms and Conditions Page](#).