

## POU3F2 Antibody

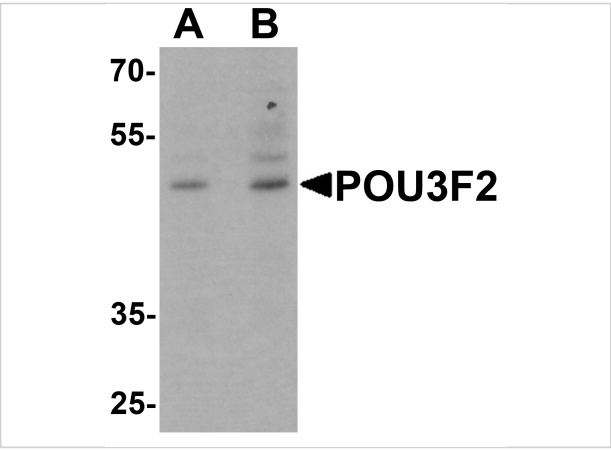
CATALOG NUMBER: 7085

### Specifications

Host Species	Rabbit
Species Reactivity	Human, Mouse, Rat
Immunogen	Rabbit polyclonal POU3F2 antibody was raised against an 18 amino acid peptide near the carboxy terminus of human POU3F2. The immunogen is located within the last 50 amino acids of POU3F2.
Conjugate	Unconjugated
Tested Applications	ELISA, IF, WB
User Note	Optimal dilutions for each application to be determined by the researcher.
Specificity	At least two isoforms are known to exist. This antibody will recognize both isoforms. POU3F2 antibody is predicted to not cross-react with other members of the POU domain class 3 family.
Predicted Molecular Weight	49 kDa

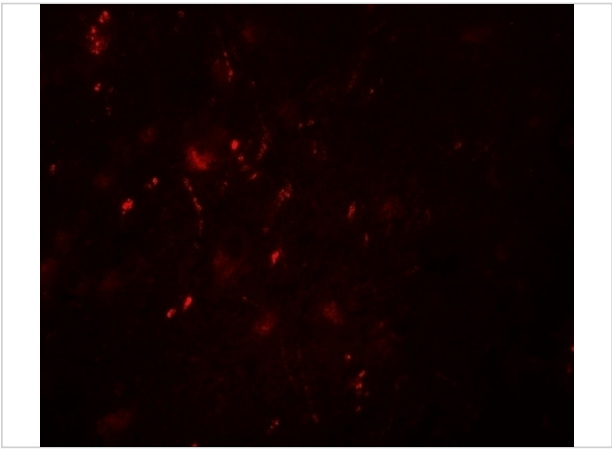
### Properties

Purification	POU3F2 Antibody is affinity chromatography purified via peptide column.
Clonality	Polyclonal
Isotype	IgG
Physical State	Liquid
Buffer	POU3F2 Antibody is supplied in PBS containing 0.02% sodium azide.
Concentration	1 mg/mL
Storage Conditions	POU3F2 antibody can be stored at 4°C for three months and -20°C, stable for up to one year. As with all antibodies care should be taken to avoid repeated freeze thaw cycles. Antibodies should not be exposed to prolonged high temperatures.



**POU3F2 Antibody 1**

Western blot analysis of POU3F2 in 3T3 cell lysate with POU3F2 antibody at (A) 1 and (B) 2 µg/mL.



**POU3F2 Antibody 2**

Immunofluorescence of POU3F2 in human brain tissue with POU3F2 antibody at 20 µg/mL.

**Disclaimer**

<b>Disclaimer</b>	Optimal dilutions/concentrations should be determined by the end user. The information provided is a guideline for product use. This product is for research use only.
-------------------	--

For research use only. For additional information, visit ProSci's [Terms and Conditions Page](#).