

## BATF Antibody

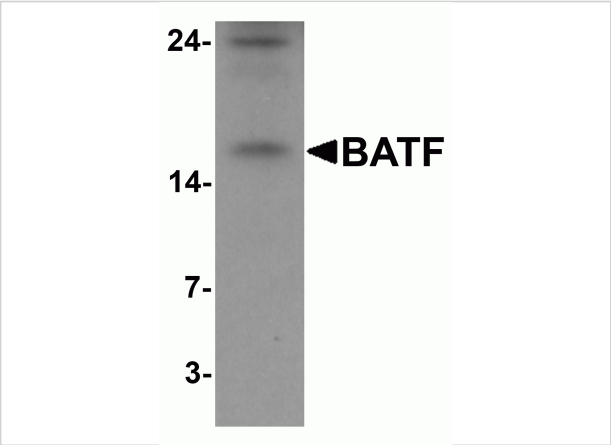
CATALOG NUMBER: 7069

### Specifications

Host Species	Rabbit
Species Reactivity	Human, Mouse, Rat
Homology	Predicted species reactivity based on immunogen sequence: Bovine: (100%)
Immunogen	BATF antibody was raised against a 16 amino acid synthetic peptide near the amino terminus of human BATF. The immunogen is located within the first 50 amino acids of BATF.
Conjugate	Unconjugated
Tested Applications	ELISA, IF, WB
User Note	Optimal dilutions for each application to be determined by the researcher.
Specificity	Multiple isoforms of BATF are known to exist. Despite its predicted molecular weight, BATF often migrates at a higher than expected molecular weight.
Predicted Molecular Weight	14 kDa

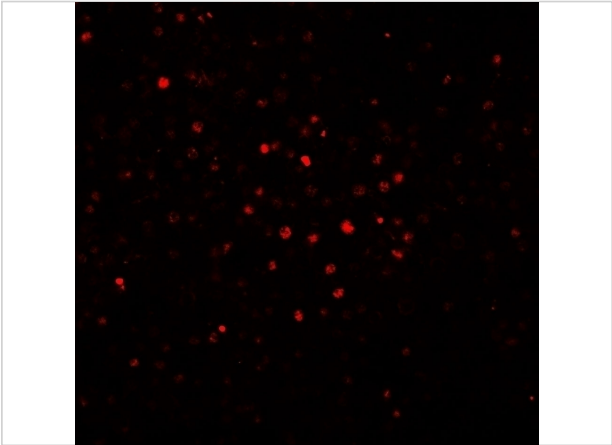
### Properties

Purification	BATF Antibody is affinity chromatography purified via peptide column.
Clonality	Polyclonal
Isotype	IgG
Physical State	Liquid
Buffer	BATF Antibody is supplied in PBS containing 0.02% sodium azide.
Concentration	1 mg/mL
Storage Conditions	BATF antibody can be stored at 4°C for three months and -20°C, stable for up to one year. As with all antibodies care should be taken to avoid repeated freeze thaw cycles. Antibodies should not be exposed to prolonged high temperatures.



BATF Antibody 1

Western blot analysis of BATF in rat spleen tissue lysate with BATF antibody at 1 µg/mL.



BATF Antibody 2

Immunofluorescence of BATF in human spleen tissue with BATF antibody at 20 µg/mL.

Disclaimer

Disclaimer	Optimal dilutions/concentrations should be determined by the end user. The information provided is a guideline for product use. This product is for research use only.
------------	--

For research use only. For additional information, visit ProSci's [Terms and Conditions Page](#).