

## CITED2 Antibody

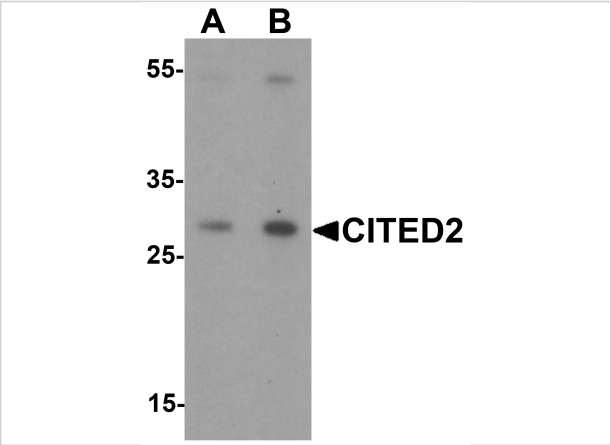
CATALOG NUMBER: 7067

### Specifications

Host Species	Rabbit
Species Reactivity	Human, Mouse, Rat
Homology	Predicted species reactivity based on immunogen sequence: Bovine: (100%)
Immunogen	CITED2 antibody was raised against an 18 amino acid synthetic peptide near the amino terminus of human CITED2. The immunogen is located within the first 50 amino acids of CITED2.
Conjugate	Unconjugated
Tested Applications	ELISA, IF, WB
User Note	Optimal dilutions for each application to be determined by the researcher.
Specificity	Multiple isoforms of CITED2 are known to exist.
Predicted Molecular Weight	30 kDa

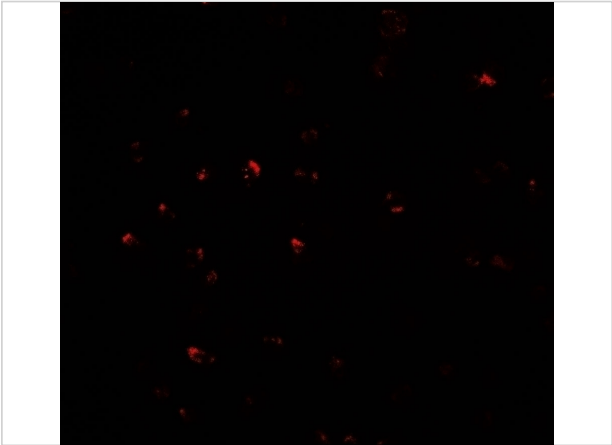
### Properties

Purification	CITED2 Antibody is affinity chromatography purified via peptide column.
Clonality	Polyclonal
Isotype	IgG
Physical State	Liquid
Buffer	CITED2 Antibody is supplied in PBS containing 0.02% sodium azide.
Concentration	1 mg/mL
Storage Conditions	CITED2 antibody can be stored at 4°C for three months and -20°C, stable for up to one year. As with all antibodies care should be taken to avoid repeated freeze thaw cycles. Antibodies should not be exposed to prolonged high temperatures.



CITED2 Antibody 1

Western blot analysis of CITED2 in Jurkat cell lysate with CITED2 antibody at (A) 1 and (B) 2 µg/mL.



CITED2 Antibody 2

Immunofluorescence of CITED2 in Jurkat cells with CITED2 antibody at 20 µg/mL.

Disclaimer

Disclaimer	Optimal dilutions/concentrations should be determined by the end user. The information provided is a guideline for product use. This product is for research use only.
------------	--

For research use only. For additional information, visit ProSci's [Terms and Conditions Page](#).