

## CMPK2 Antibody

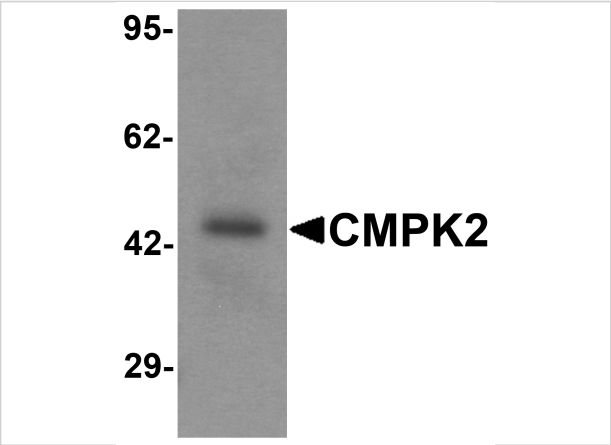
CATALOG NUMBER: 7063

### Specifications

Host Species	Rabbit
Species Reactivity	Human, Mouse, Rat
Immunogen	CMPK2 antibody was raised against a 19 amino acid synthetic peptide near the carboxy terminus of human CMPK2. The immunogen is located within amino acids 370 - 420 of CMPK2.
Conjugate	Unconjugated
Tested Applications	ELISA, IF, WB
User Note	Optimal dilutions for each application to be determined by the researcher.
Specificity	Multiple isoforms of CMPK2 are known to exist.
Predicted Molecular Weight	49 kDa

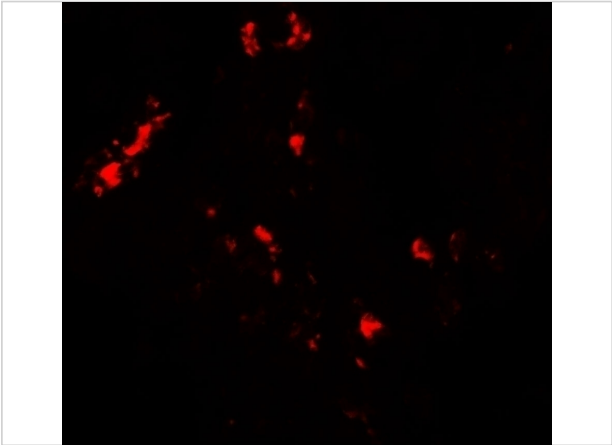
### Properties

Purification	CMPK2 Antibody is affinity chromatography purified via peptide column.
Clonality	Polyclonal
Isotype	IgG
Physical State	Liquid
Buffer	CMPK2 Antibody is supplied in PBS containing 0.02% sodium azide.
Concentration	1 mg/mL
Storage Conditions	CMPK2 antibody can be stored at 4°C for three months and -20°C, stable for up to one year. As with all antibodies care should be taken to avoid repeated freeze thaw cycles. Antibodies should not be exposed to prolonged high temperatures.



CMPK2 Antibody 1

Western blot analysis of CMPK2 in rat lung tissue lysate with CMPK2 antibody at 1 µg/mL



CMPK2 Antibody 2

Immunofluorescence of CMPK2 in human lung tissue with CMPK2 antibody at 20 µg/mL.

Disclaimer

Disclaimer	Optimal dilutions/concentrations should be determined by the end user. The information provided is a guideline for product use. This product is for research use only.
------------	--

For research use only. For additional information, visit ProSci's [Terms and Conditions Page](#).