

GHDC Antibody

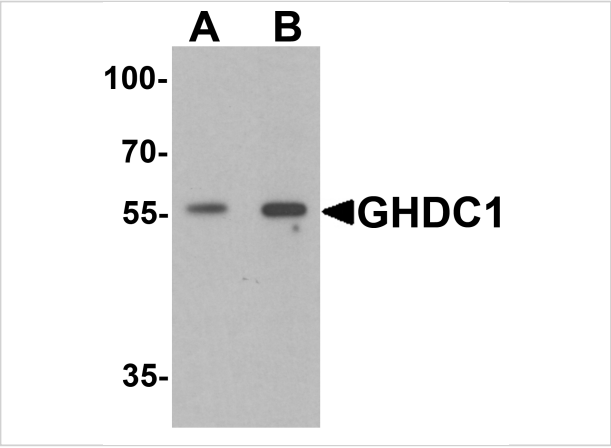
CATALOG NUMBER: 7061

Specifications

Host Species	Rabbit
Species Reactivity	Human, Mouse, Rat
Immunogen	Rabbit polyclonal GHDC antibody was raised against a 19 amino acid peptide near the amino terminus of human GHDC. The immunogen is located within amino acids 100 - 150 of GHDC.
Conjugate	Unconjugated
Tested Applications	ELISA, IF, WB
User Note	Optimal dilutions for each application to be determined by the researcher.
Specificity	Multiple isoforms are known to exist.
Predicted Molecular Weight	58 kDa

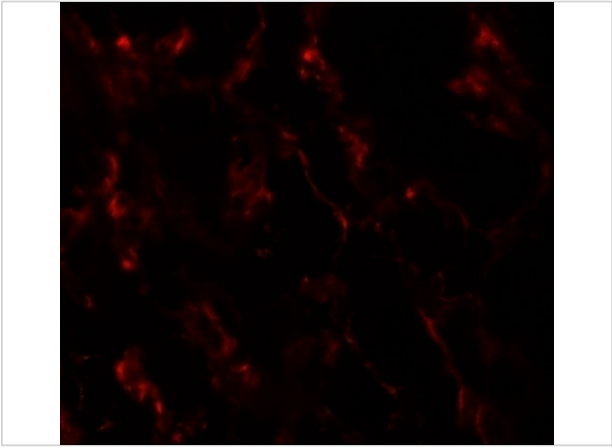
Properties

Purification	GHDC Antibody is affinity chromatography purified via peptide column.
Clonality	Polyclonal
Isotype	IgG
Physical State	Liquid
Buffer	GHDC Antibody is supplied in PBS containing 0.02% sodium azide.
Concentration	1 mg/mL
Storage Conditions	GHDC antibody can be stored at 4°C for three months and -20°C, stable for up to one year. As with all antibodies care should be taken to avoid repeated freeze thaw cycles. Antibodies should not be exposed to prolonged high temperatures.



GHDC Antibody 1

Western blot analysis of GHDC in 293 cell lysate with GHDC antibody at (A) 0.5 and (B) 1 µg/mL.



GHDC Antibody 2

Immunofluorescence of GHDC1 in human breast tissue with GHDC1 antibody at 20 µg/mL.

Disclaimer

Disclaimer	Optimal dilutions/concentrations should be determined by the end user. The information provided is a guideline for product use. This product is for research use only.
-------------------	--

For research use only. For additional information, visit ProSci's [Terms and Conditions Page](#).