

PLAGL2 Antibody

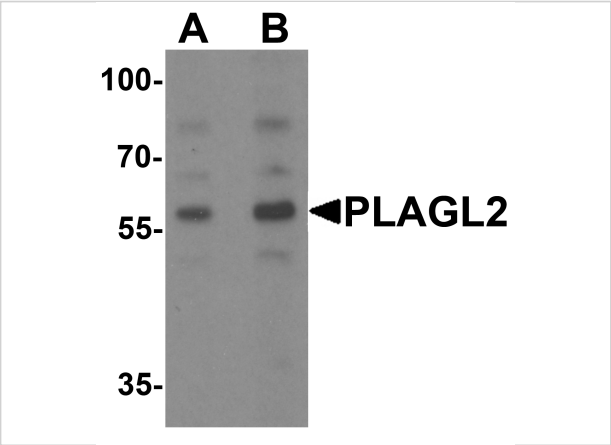
CATALOG NUMBER: 7053

Specifications

Host Species	Rabbit
Species Reactivity	Human, Mouse, Rat
Immunogen	PLAGL2 antibody was raised against a 19 amino acid synthetic peptide near the amino terminus of human PLAGL2. The immunogen is located within amino acids 40 - 90 of PLAGL2.
Conjugate	Unconjugated
Tested Applications	ELISA, IF, IHC-P, WB
User Note	Optimal dilutions for each application to be determined by the researcher.
Specificity	At least two isoforms are known to exist.
Predicted Molecular Weight	55 kDa

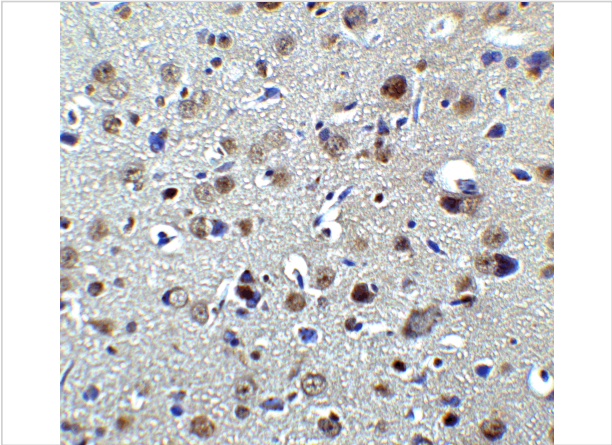
Properties

Purification	PLAGL2 Antibody is affinity chromatography purified via peptide column.
Clonality	Polyclonal
Isotype	IgG
Physical State	Liquid
Buffer	PLAGL2 Antibody is supplied in PBS containing 0.02% sodium azide.
Concentration	1 mg/mL
Storage Conditions	PLAGL2 antibody can be stored at 4°C for three months and -20°C, stable for up to one year. As with all antibodies care should be taken to avoid repeated freeze thaw cycles. Antibodies should not be exposed to prolonged high temperatures.



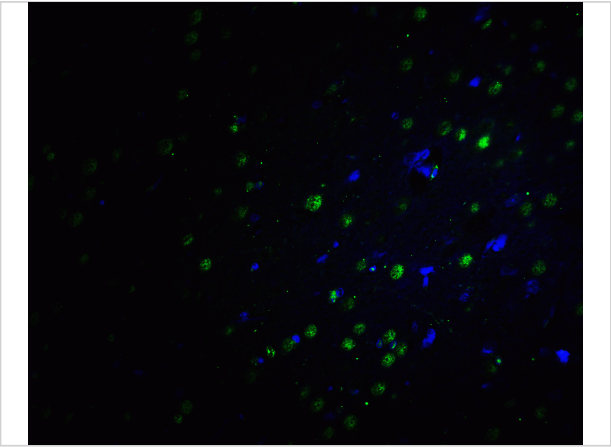
PLAGL2 Antibody 1

Western blot analysis of PLAGL2 in rat brain tissue lysate with PLAGL2 antibody at (A) 1 and (B) 2 µg/mL.



PLAGL2 Antibody 2

Immunohistochemistry of PLAGL2 in rat brain tissue with PLAGL2 antibody at 2 µg/mL.



PLAGL2 Antibody 3

Immunofluorescence of PLAGL2 in rat brain tissue with PLAGL2 antibody at 20 µg/mL.

Green: PLAGL2 Antibody (7053)
Blue: DAPI staining

Disclaimer

Disclaimer	Optimal dilutions/concentrations should be determined by the end user. The information provided is a guideline for product use. This product is for research use only.
------------	--

For research use only. For additional information, visit ProSci's [Terms and Conditions Page](#).