

## WIPI1 Antibody

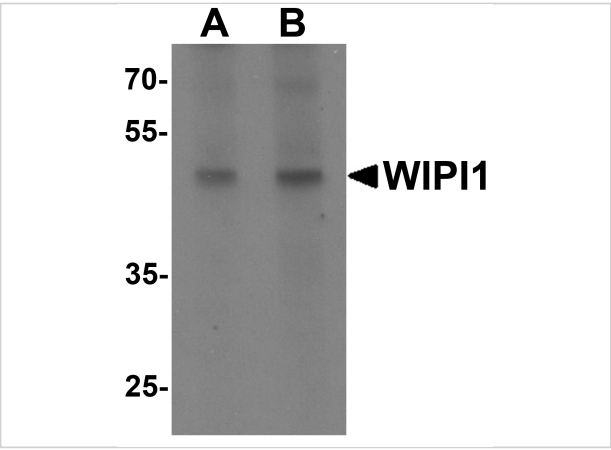
CATALOG NUMBER: 7041

### Specifications

Host Species	Rabbit
Species Reactivity	Human, Mouse, Rat
Immunogen	WIPI1 antibody was raised against a 17 amino acid synthetic peptide near the carboxy terminus of human WIPI1. The immunogen is located within amino acids 350 - 400 of WIPI1.
Conjugate	Unconjugated
Tested Applications	ELISA, IF, WB
User Note	Optimal dilutions for each application to be determined by the researcher.
Specificity	At least two isoforms of WIPI1 are known to exist; this antibody will detect both isoforms.
Predicted Molecular Weight	49 kDa

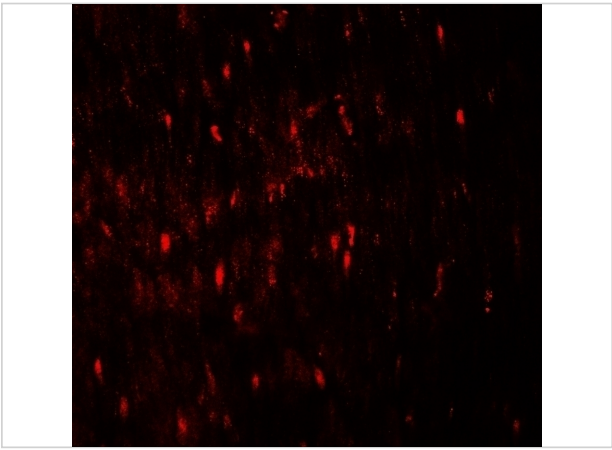
### Properties

Purification	WIPI1 Antibody is affinity chromatography purified via peptide column.
Clonality	Polyclonal
Isotype	IgG
Physical State	Liquid
Buffer	WIPI1 Antibody is supplied in PBS containing 0.02% sodium azide.
Concentration	1 mg/mL
Storage Conditions	WIPI1 antibody can be stored at 4°C for three months and -20°C, stable for up to one year. As with all antibodies care should be taken to avoid repeated freeze thaw cycles. Antibodies should not be exposed to prolonged high temperatures.



WIP1 Antibody 1

Western blot analysis of WIP1 in rat colon tissue lysate with WIP1 antibody at (A) 1 and (B) 2 µg/mL.



WIP1 Antibody 2

Immunofluorescence of WIP1 in human colon tissue with WIP1 antibody at 20 µg/mL.

Disclaimer

Disclaimer	Optimal dilutions/concentrations should be determined by the end user. The information provided is a guideline for product use. This product is for research use only.
------------	--

For research use only. For additional information, visit ProSci's [Terms and Conditions Page](#).