

## SGSM2 Antibody

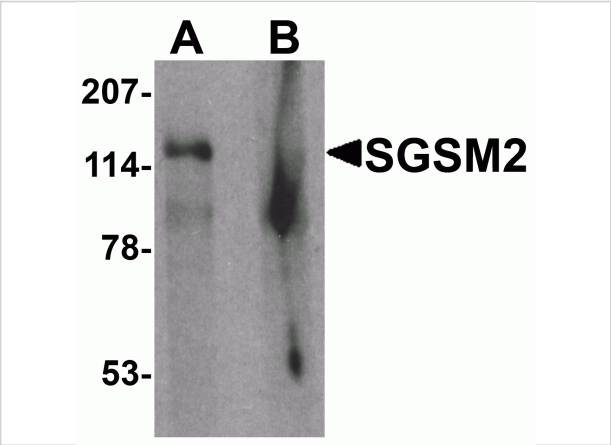
CATALOG NUMBER: 7035

### Specifications

Host Species	Rabbit
Species Reactivity	Human, Mouse, Rat
Immunogen	SGSM2 antibody was raised against an 18 amino acid synthetic peptide near the center of human SGSM2. The immunogen is located within amino acids 650 - 700 of SGSM2.
Conjugate	Unconjugated
Tested Applications	ELISA, IF, WB
User Note	Optimal dilutions for each application to be determined by the researcher.
Specificity	Multiple isoforms of SGSM2 are known to exist. SGSM2 antibody is predicted to not cross react with other SGSM family proteins.
Predicted Molecular Weight	116 kDa

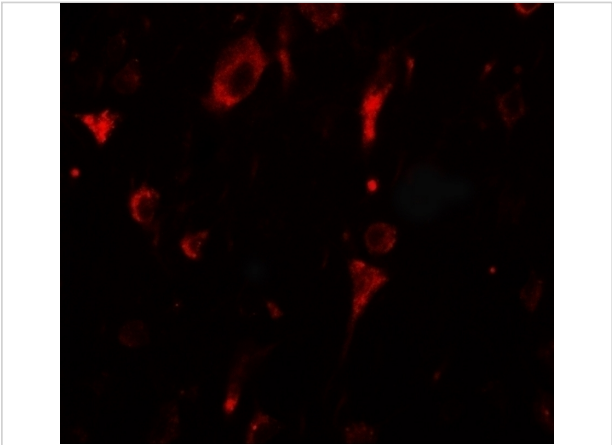
### Properties

Purification	SGSM2 Antibody is affinity chromatography purified via peptide column.
Clonality	Polyclonal
Isotype	IgG
Physical State	Liquid
Buffer	SGSM2 Antibody is supplied in PBS containing 0.02% sodium azide.
Concentration	1 mg/mL
Storage Conditions	SGSM2 antibody can be stored at 4°C for three months and -20°C, stable for up to one year. As with all antibodies care should be taken to avoid repeated freeze thaw cycles. Antibodies should not be exposed to prolonged high temperatures.



SGSM2 Antibody 1

Western blot analysis of SGSM2 in human cerebellum tissue lysate with SGSM2 antibody at 1 µg/ml in (A) the absence and (B) the presence of blocking peptide



SGSM2 Antibody 2

Immunofluorescence of SGSM2 in human brain tissue with SGSM2 antibody at 20 µg/mL.

Disclaimer

Disclaimer	Optimal dilutions/concentrations should be determined by the end user. The information provided is a guideline for product use. This product is for research use only.
------------	--

For research use only. For additional information, visit ProSci's [Terms and Conditions Page](#).