



ProSci Incorporated
12170 Flint Place
Poway, CA 92064, USA
prosci-inc.com

P: +1 (888) 513-9525
Local: +1 (858) 513-2638
Fax: +1 (858) 513-2692

customercare@prosci-inc.com
techsupport@prosci-inc.com

SCUBE3 Antibody

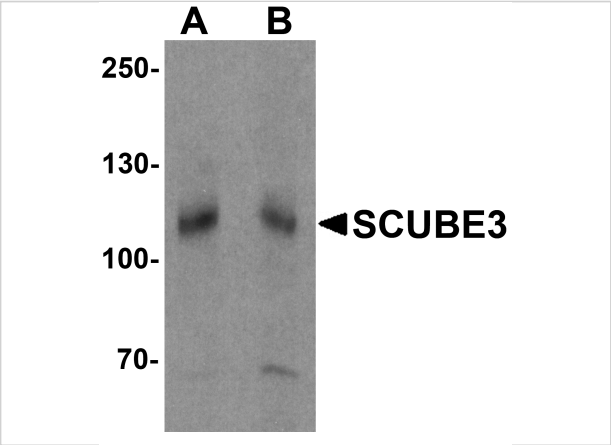
CATALOG NUMBER: 7003

Specifications

Host Species	Rabbit
Species Reactivity	Human, Mouse
Immunogen	SCUBE3 antibody was raised against a 15 amino acid synthetic peptide near the center of human SCUBE3. The immunogen is located within amino acids 210 - 260 of SCUBE3.
Conjugate	Unconjugated
Tested Applications	ELISA, IF, WB
User Note	Optimal dilutions for each application to be determined by the researcher.
Specificity	At least two isoforms of SCUBE3 are known to exist. SCUBE3 antibody is predicted to not cross-react with other SCUBE members
Predicted Molecular Weight	109 kDa

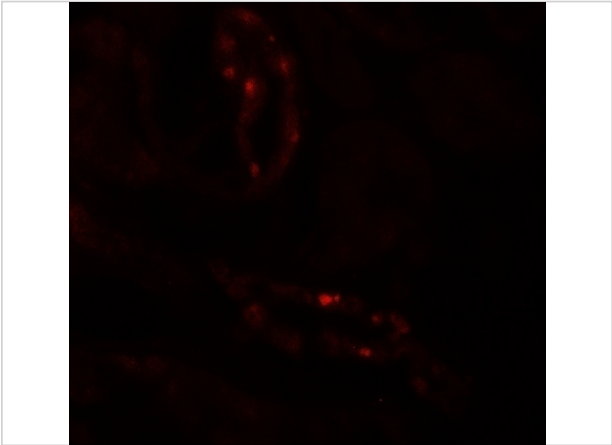
Properties

Purification	SCUBE3 Antibody is affinity chromatography purified via peptide column.
Clonality	Polyclonal
Isotype	IgG
Physical State	Liquid
Buffer	SCUBE3 Antibody is supplied in PBS containing 0.02% sodium azide.
Concentration	1 mg/mL
Storage Conditions	SCUBE3 antibody can be stored at 4°C for three months and -20°C, stable for up to one year. As with all antibodies care should be taken to avoid repeated freeze thaw cycles. Antibodies should not be exposed to prolonged high temperatures.



SCUBE3 Antibody 1

Western blot analysis of SCUBE3 in mouse kidney tissue lysate with SCUBE3 antibody at (A) 1 and (B) 2 $\mu\text{g/mL}$.



SCUBE3 Antibody 2

Immunofluorescence of SCUBE3 in human kidney tissue with SCUBE3 antibody at 20 $\mu\text{g/mL}$.

Disclaimer

Disclaimer	Optimal dilutions/concentrations should be determined by the end user. The information provided is a guideline for product use. This product is for research use only.
------------	--

For research use only. For additional information, visit ProSci's [Terms and Conditions Page](#).