

## ZF21 Antibody

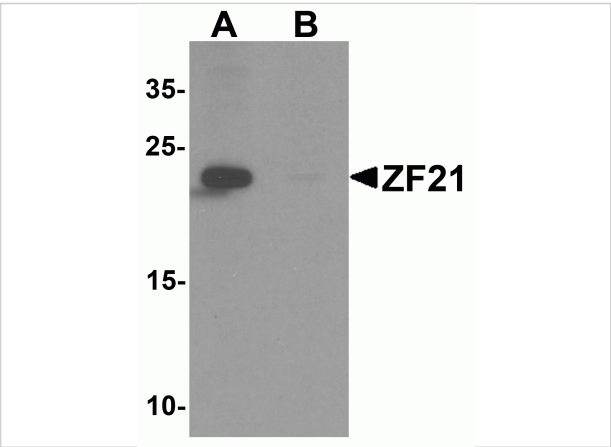
CATALOG NUMBER: 6935

### Specifications

Host Species	Rabbit
Species Reactivity	Human, Mouse, Rat
Homology	Predicted species reactivity based on immunogen sequence: Bovine: (93%)
Immunogen	ZF21 antibody was raised against a 15 amino acid synthetic peptide near the amino terminus of human ZF21. The immunogen is located within the first 50 amino acids of ZF21.
Conjugate	Unconjugated
Tested Applications	ELISA, IF, WB
User Note	Optimal dilutions for each application to be determined by the researcher.
Specificity	At least two isoforms of ZF21 are known to exist; this antibody will detect both isoforms.

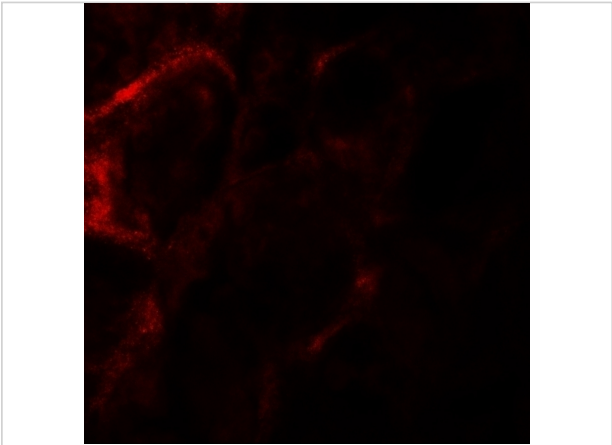
### Properties

Purification	ZF21 Antibody is affinity chromatography purified via peptide column.
Clonality	Polyclonal
Isotype	IgG
Physical State	Liquid
Buffer	ZF21 Antibody is supplied in PBS containing 0.02% sodium azide.
Concentration	1 mg/mL
Storage Conditions	ZF21 antibody can be stored at 4°C for three months and -20°C, stable for up to one year. As with all antibodies care should be taken to avoid repeated freeze thaw cycles. Antibodies should not be exposed to prolonged high temperatures.



ZF21 Antibody 1

Western blot analysis of ZF21 in 3T3 cell tissue lysate with ZF21 antibody at 1 µg/ml in (A) the absence and (B) the presence of blocking peptide.



ZF21 Antibody 2

Immunofluorescence of ZF21 in human kidney tissue with ZF21 antibody at 20 µg/mL.

Disclaimer

Disclaimer	Optimal dilutions/concentrations should be determined by the end user. The information provided is a guideline for product use. This product is for research use only.
------------	--

For research use only. For additional information, visit ProSci's [Terms and Conditions Page](#).