

## CCDC22 Antibody

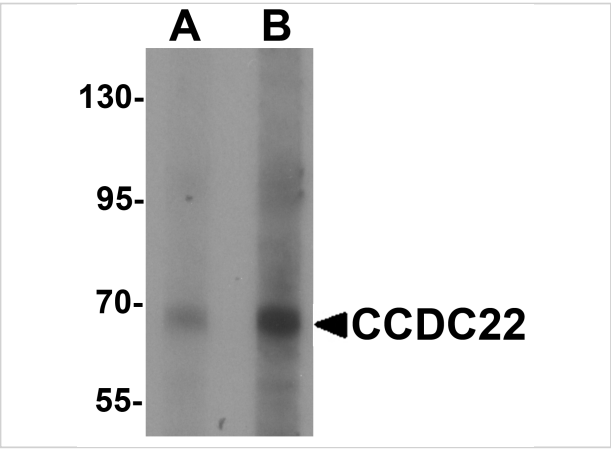
CATALOG NUMBER: 6933

### Specifications

Host Species	Rabbit
Species Reactivity	Human, Mouse, Rat
Homology	Predicted species reactivity based on immunogen sequence: Bovine: (100%)
Immunogen	CCDC22 antibody was raised against an 18 amino acid synthetic peptide near the amino terminus of human CCDC22. The immunogen is located within amino acids 530 - 580 of CCDC22.
Conjugate	Unconjugated
Tested Applications	ELISA, IF, WB
User Note	Optimal dilutions for each application to be determined by the researcher.
Specificity	At least three isoforms of CCDC22 are known to exist; this antibody will detect the two largest isoforms.

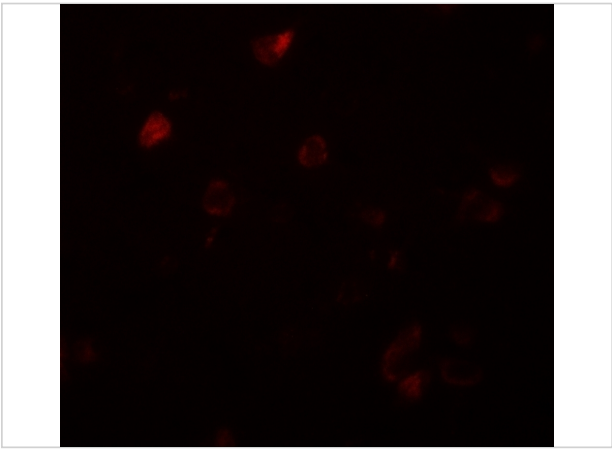
### Properties

Purification	CCDC22 Antibody is affinity chromatography purified via peptide column.
Clonality	Polyclonal
Isotype	IgG
Physical State	Liquid
Buffer	CCDC22 Antibody is supplied in PBS containing 0.02% sodium azide.
Concentration	1 mg/mL
Storage Conditions	CCDC22 antibody can be stored at 4°C for three months and -20°C, stable for up to one year. As with all antibodies care should be taken to avoid repeated freeze thaw cycles. Antibodies should not be exposed to prolonged high temperatures.



CCDC22 Antibody 1

Western blot analysis of CCDC22 in 293 cell lysate with CCDC22 antibody at (A) 1 and (B) 2 µg/mL.



CCDC22 Antibody 2

Immunofluorescence of CCDC22 in human brain tissue with CCDC22 antibody at 20 µg/mL.

Disclaimer

Disclaimer	Optimal dilutions/concentrations should be determined by the end user. The information provided is a guideline for product use. This product is for research use only.
------------	--

For research use only. For additional information, visit ProSci's [Terms and Conditions Page](#).