

RAB21 Antibody

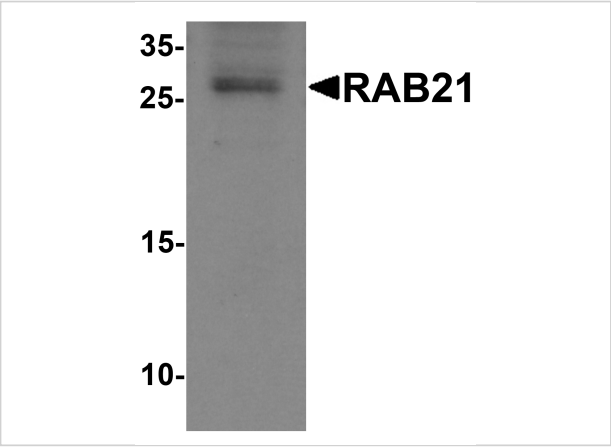
CATALOG NUMBER: 6927

Specifications

Host Species	Rabbit
Species Reactivity	Human, Mouse, Rat
Homology	Predicted species reactivity based on immunogen sequence: Bovine: (95%)
Immunogen	RAB21 antibody was raised against a 19 amino acid synthetic peptide near the carboxy terminus of human RAB21. The immunogen is located within the last 50 amino acids of RAB21.
Conjugate	Unconjugated
Tested Applications	ELISA, IF, WB
User Note	Optimal dilutions for each application to be determined by the researcher.
Specificity	This antibody is predicted to not cross-react with other Ras-related proteins

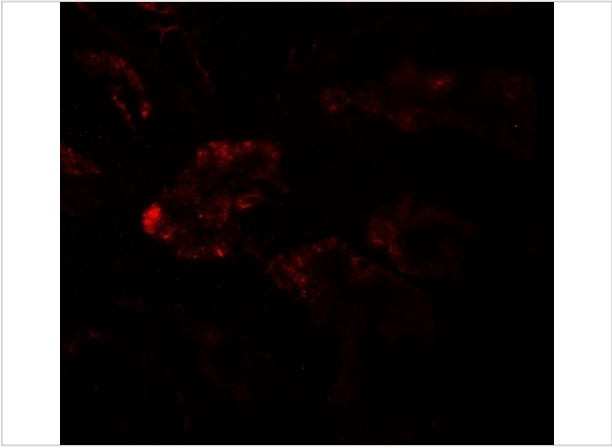
Properties

Purification	RAB21 Antibody is affinity chromatography purified via peptide column.
Clonality	Polyclonal
Isotype	IgG
Physical State	Liquid
Buffer	RAB21 Antibody is supplied in PBS containing 0.02% sodium azide.
Concentration	1 mg/mL
Storage Conditions	RAB21 antibody can be stored at 4°C for three months and -20°C, stable for up to one year. As with all antibodies care should be taken to avoid repeated freeze thaw cycles. Antibodies should not be exposed to prolonged high temperatures.



RAB21 Antibody 1

Western blot analysis of RAB21 in mouse kidney tissue lysate with RAB21 antibody at 1 µg/mL.



RAB21 Antibody 2

Immunofluorescence of RAB21 in human kidney tissue with RAB21 antibody at 20 µg/mL.

Disclaimer

Disclaimer	Optimal dilutions/concentrations should be determined by the end user. The information provided is a guideline for product use. This product is for research use only.
------------	--

For research use only. For additional information, visit ProSci's [Terms and Conditions Page](#).