

DELE Antibody

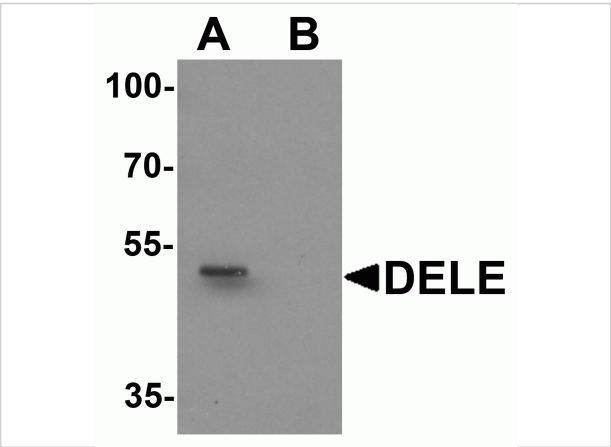
CATALOG NUMBER: 6919

Specifications

Host Species	Rabbit
Species Reactivity	Human, Rat
Homology	Predicted species reactivity based on immunogen sequence: Mouse: (71%)
Immunogen	DELE antibody was raised against an 18 amino acid synthetic peptide near the amino terminus of human DELE. The immunogen is located within the first 50 amino acids of DELE.
Conjugate	Unconjugated
Tested Applications	ELISA, IF, WB
User Note	Optimal dilutions for each application to be determined by the researcher.

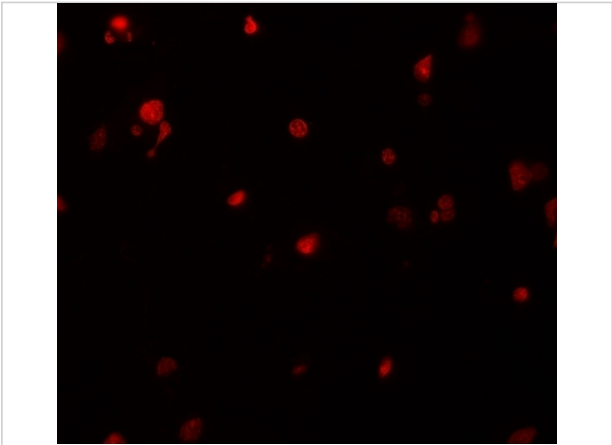
Properties

Purification	DELE Antibody is affinity chromatography purified via peptide column.
Clonality	Polyclonal
Isotype	IgG
Physical State	Liquid
Buffer	DELE Antibody is supplied in PBS containing 0.02% sodium azide.
Concentration	1 mg/mL
Storage Conditions	DELE antibody can be stored at 4°C for three months and -20°C, stable for up to one year. As with all antibodies care should be taken to avoid repeated freeze thaw cycles. Antibodies should not be exposed to prolonged high temperatures.



DELE Antibody 1

Western blot analysis of DELE in rat brain tissue lysate with DELE antibody at 1 µg/ml in (A) the absence and (B) the presence of blocking peptide.



DELE Antibody 2

Immunofluorescence of DELE in human brain tissue with DELE antibody at 20 µg/mL.

Disclaimer

Disclaimer	Optimal dilutions/concentrations should be determined by the end user. The information provided is a guideline for product use. This product is for research use only.
------------	--

For research use only. For additional information, visit ProSci's [Terms and Conditions Page](#).