

TRAP Antibody

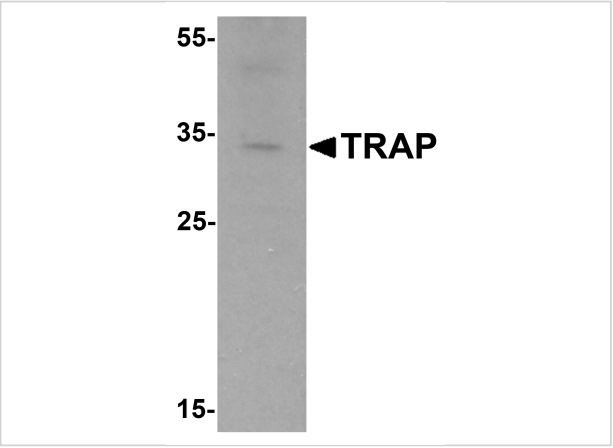
CATALOG NUMBER: 6911

Specifications

Host Species	Rabbit
Species Reactivity	Human, Mouse
Homology	Predicted species reactivity based on immunogen sequence: Pig: (94%), Rat: (89%), Rabbit: (88%)
Immunogen	TRAP antibody was raised against an 18 amino acid synthetic peptide near the carboxy terminus of human TRAP. The immunogen is located within the last 50 amino acids of TRAP.
Conjugate	Unconjugated
Tested Applications	ELISA, IF, WB
User Note	Optimal dilutions for each application to be determined by the researcher.

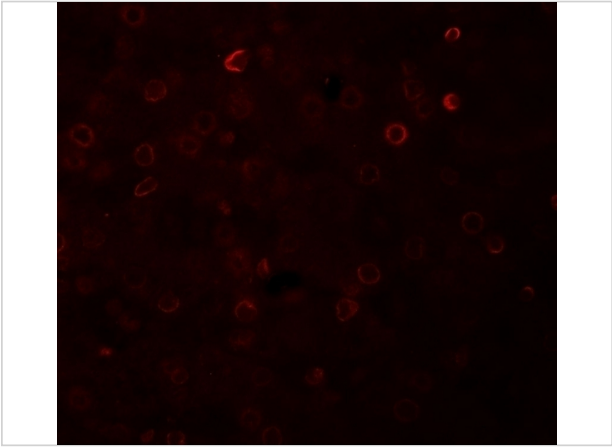
Properties

Purification	TRAP Antibody is affinity chromatography purified via peptide column.
Clonality	Polyclonal
Isotype	IgG
Physical State	Liquid
Buffer	TRAP Antibody is supplied in PBS containing 0.02% sodium azide.
Concentration	1 mg/mL
Storage Conditions	TRAP antibody can be stored at 4°C for three months and -20°C, stable for up to one year. As with all antibodies care should be taken to avoid repeated freeze thaw cycles. Antibodies should not be exposed to prolonged high temperatures.



TRAP Antibody 1

Western blot analysis of TRAP in mouse brain tissue lysate with TRAP antibody at 1 µg/mL.



TRAP Antibody 2

Immunofluorescence of TRAP in human liver tissue with TRAP antibody at 20 µg/mL.

Disclaimer

Disclaimer	Optimal dilutions/concentrations should be determined by the end user. The information provided is a guideline for product use. This product is for research use only.
------------	--

For research use only. For additional information, visit ProSci's [Terms and Conditions Page](#).